

New Haven Board of Alders Community Development Committee Meeting

Community Investment Fund – Capital Improvement Grant
February 2023

CITY OF NEW HAVEN
JUSTIN ELICKER, MAYOR
BOARD OF ALDERS

TOGETHER
NEW HAVEN

Today's Discussion

- Stimulus Overview
- CIF Round 2
- Discussion on Next Steps

<https://www.togethernewhaven.com/>

TOGETHER NEW HAVEN

Together New Haven supports and promotes local companies, offers technical assistance for businesses that must find new ways to engage customers at a distance, and to connects us as a region and as a community.



The American Rescue Plan is for you.

Learn more at
[TogetherNewHaven.com/Recovery](https://www.togethernewhaven.com/Recovery)



New Haven's Economic Development Administration is tracking the impact of the COVID-19 pandemic on our economy. Each month, we will update our Economic Indicators Report. Visit our Economic Indicators page for highlights and analysis, or to download the full report.



How you can benefit from the American Rescue Plan.

Direct Payments

How Much?

\$1,400 per individual, including couples

\$1,400 per dependent, including adult dependents

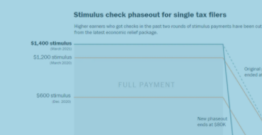
Who's Eligible?

85% of Americans qualify

Single filers earning up to \$75,000 with partial payments for filers earning up to \$80,000

Head of Household earning up to \$112,500

Couples earning up to \$150,000



Childcare Assistance

For Providers:

\$25 Billion Child Care Provider stabilization fund for eligible businesses

\$15 billion expanded child care assistance through the Child Care and Development Block Grant (CCDBG)

For Families:

Extended paid leave tax credit and reset for families that have taken leave this year.

Childcare Tax Credit for families, \$4,000 for 1 child, \$8,000 for 2+ children



Small Business Support

Grant and Loan Opportunities:

\$15 Billion in additional EDL Loans

\$7.5 Billion in additional PPP Loans

\$28.6 Billion for Restaurants Revitalization Fund

\$125 Billion additional in additional Shuttered Venue Operators Grants

Employee Support:

The FFCRA Extended Paid Leave tax credit has been reset for all and extended to cover the period from April 1, 2021 to September 30, 2021.



Citywide Recovery Platform



**Youth
Engagement
& Early
Childhood**

Downtown



**I'm Home
Initiative**



**Wealth
Creation
& Economy**



**Vocational
& Technical
Initiative**

Long Wharf



**Climate
Emergency**

**TOGETHER
NEW HAVEN**

CIF Round 2

TOGETHER
NEW HAVEN



- **Downtown CIF**
\$7.1 M - value of place and wellbeing for all residents.



- **Long Wharf CIF**
\$25.0 M – implementation of Long Wharf Plan, Ph 1



Downtown

TOGETHER
NEW HAVEN

Downtown CIF Round 2 Application

1. Create public art and streetscape improvements in the Ninth Square (\$1.3 M).
2. Create a café kiosk and public restroom and the improvement of the Temple St streetscape and reconfigure the Temple St. Intersection to improve bike/pedestrian facilities (\$4.3 M).
3. Construct a family playground as a signature community asset (\$1.5 M).

Downtown New Haven Improvement Projects

Item	Name	Cost
1	Architectural Lighting	\$ 1,300,000
2	New Haven Green & Temple Street	\$ 4,300,000
3	Family Park	\$ 1,500,000
	Total CIF Request	\$ 7,100,000



Contributors – Greater New Haven Chamber of Commerce, Market New Haven & Town Green Special Services District



Downtown

New Haven Green Improvements: Restrooms & Café Kiosk

To improve access to vital services on the Green and traffic safety on Temple St., the City of New Haven seeks \$4.3M for **Project 2** of its Downtown CIF Capital Improvement Grant Request. **Project 2** is split into two Sub-Projects (A: Restroom & Café Kiosk) (B: Temple St. Streetscape & Roadway Improvements). The specific project details are as followed:

The New Haven Green is a major transit hub, seeing 20,000 bus passengers daily. However, visitors and residents are often met with lack of access to vital services on the Green, like restrooms or a convenient place to purchase sundries close to bussing shelters.

The Community Investment Fund grant program creates a unique opportunity to ameliorate the impact on local businesses that often act as providers of public restrooms in their current absence downtown, maintain public dignity, alleviate public health concerns and provide access to vital services on the Green, a popular transit hub while improving public safety, overall wellbeing, and charm.

City of New Haven and the Greater New Haven Chamber of Commerce worked together to evaluate the feasibility of constructing a Café Kiosk and adjoining public restrooms on the Green closest to the transit hubs. The corners of Church & Chapel and Elm & Temple. The cost is estimated to be \$2,107,800.



The two photos above are only samples, final design to be consistent with architectural standards of Downtown



Downtown

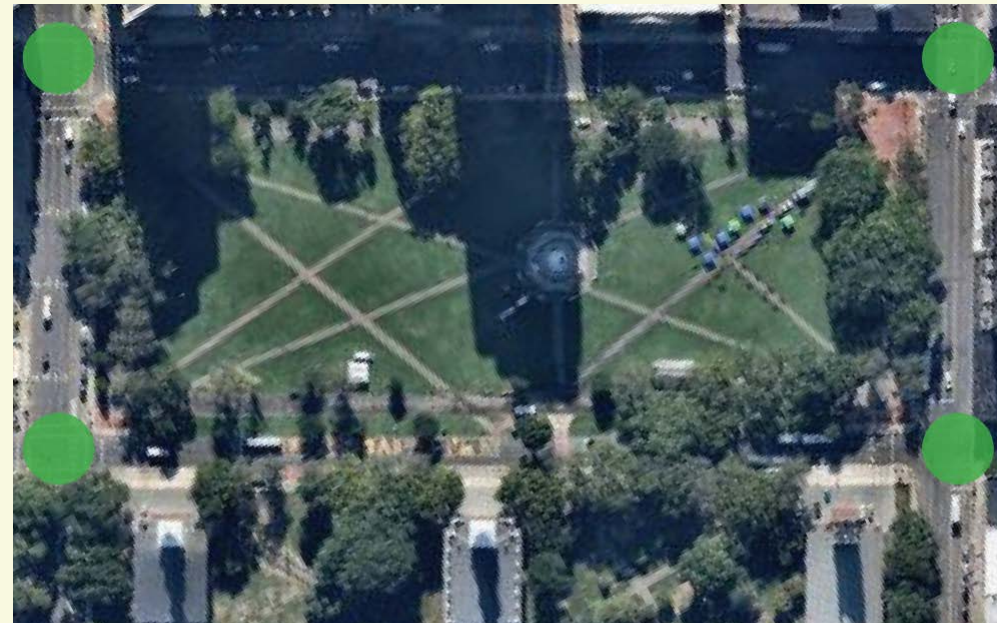
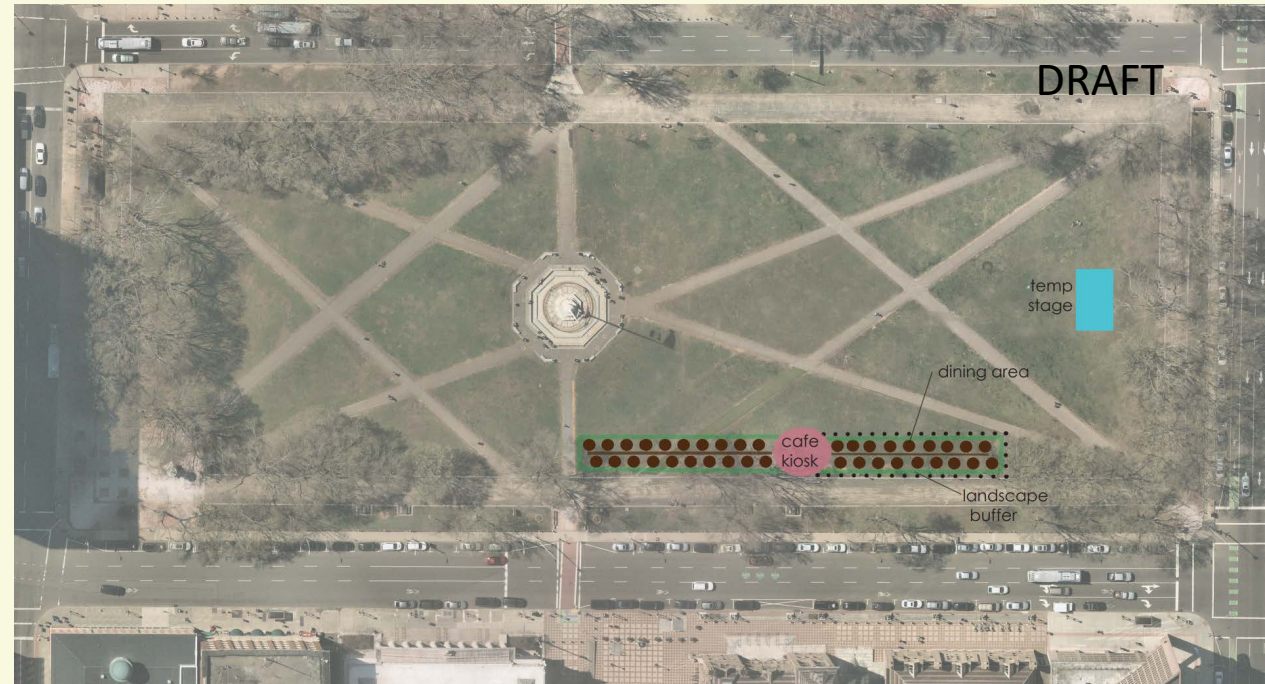
TOGETHER
NEW HAVEN





Downtown

TOGETHER
NEW HAVEN





Downtown

TOGETHER
NEW HAVEN



Example Luckey Climbe



Long Wharf

TOGETHER
NEW HAVEN

■ Long Wharf CIF Round 2 Application

1. Start the Gateway District project with demolition of the former Gateway Community College (\$6.9M).
2. Develop a welcoming and active public park and coastal open space (\$12.1M).
3. Redesign Long Wharf Drive for flood resilience and park improvements (\$4.0M).
4. Build the community marina at the Canal Dock Boathouse (\$2.0M).





Long Wharf

TOGETHER
NEW HAVEN



Long Wharf New Haven Redevelopment Projects

Item	Name	Cost
1	Gateway District Predevelopment & Site Readiness	\$ 6,900,000
2	Long Wharf Park	\$ 12,100,000
3	Long Wharf Drive Realignment	\$ 4,000,000
4	Community Marina	\$ 2,000,000
	Total CIF Request	\$ 25,000,000

Part 1 - Gateway



Long Wharf Park Revitalization

Investment: \$12.1 M

Benefits:

- Address social inequalities
- Provide modern open space with diverse amenities
 - Food Truck Paradise
 - Playground/Fitness Course
 - Universally Accessible Pathways
 - Sustainable Plantings
- Advance recommendations of POCD and Long Wharf Responsible Growth Plan



Long Wharf Drive Realignment

Investment: \$4 M

Benefits:

- Improve bicycle and pedestrian facilities
- Invest in coastal resiliency
- Create dry access to the Harbor District



Community Marina

Investment: \$2 M

Benefits:

- Address social inequalities
- Provide dedicated waterfront access and amenities for local residents
- Partner with locally owned nonprofit operator focused on underserved communities – Canal Dock Boathouse
- Advance recommendations of POCD and Long Wharf Responsible Growth Plan



Downtown & Long Wharf

CIF Program Implementation Schedule

Construction to be implemented over the next three years:

- FY23
- FY24
- FY25

CIF City of New Haven Timeline Goals		2023				2024				2025			
Construction designed to be implemented (FY23, FY24 & FY25)		1st	2nd	3rd	4th	1st	2nd	3rd	4th	1st	2nd	3rd	4th
CIF Major Projects													
a	Architectural Lighting (Intersection Connection & Orange St)			X									
b	New Haven Green & Temple St						X	X	X	X	X	X	X
c	Family Playground							X				X	

CIF City of New Haven Timeline Goals		2023				2024				2025			
Construction designed to be implemented (FY23, FY24 & FY25)		1st	2nd	3rd	4th	1st	2nd	3rd	4th	1st	2nd	3rd	4th
CIF Major Projects													
a	Gateway District (Demo., Pre-Dev., Planning & Design)							X					
b	Long Wharf Park			X	X								
c	Reconfiguration of Long Wharf Drive								X	X			
d	Community Marina (Seasonal construction)		X	X			X	X			X	X	

Thank You & Discussion

CITY OF NEW HAVEN

JUSTIN ELICKER, MAYOR

BOARD OF ALDERS

TOGETHER
NEW HAVEN