

# Orange Street Lighting Project


## Installation Plan:


Lights will be suspended from stainless steel cable anchored to various locations on buildings on either side of the street approximately 22' above street level.


Anchors will be secured to building facings drilling a small hole to receive a threaded stud that will be permanently affixed to the building with industrial epoxy.

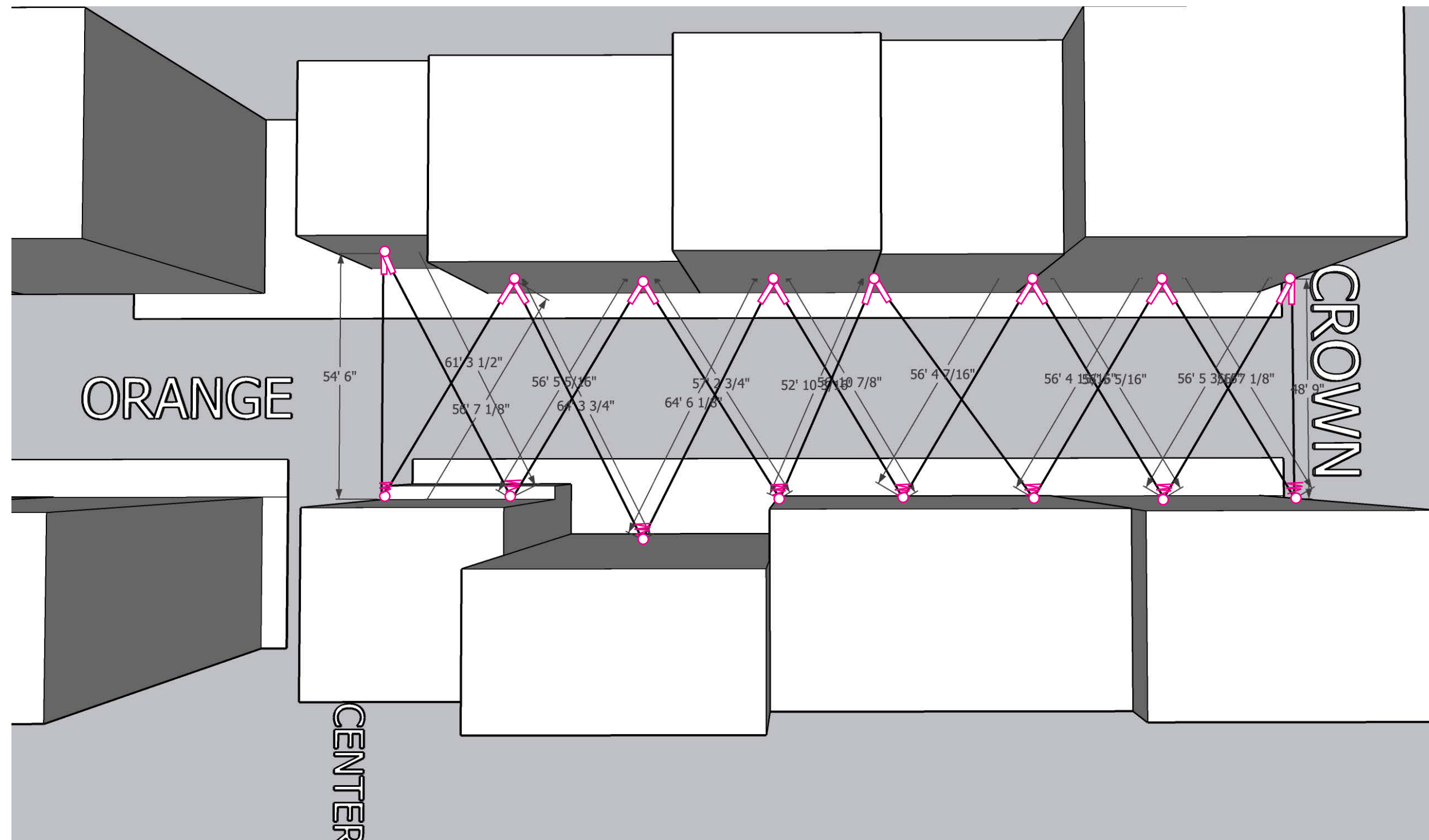
Below is an approximate layout of the anchor locations on the buildings.

Efforts will be made to avoid unique architectural details, drilling only into brick facings.

 Turnbuckles will be used intermittently to reduce the amount of weight and tension on each anchor

 Wall anchors allow cable, lights and turnbuckles to be connected across the span of the street

 Springs are st on walls opposing turnbuckles to reduce stress on masonry and acnhors attached to the cable system



# Orange Street Lighting Project

## LED Light Strands:

The Enbrighten lights strands use low voltage LED lights and have the ability to extend up to 750 feet on one plug. This allows for only one power source with two plugs to illuminate the entire street.

The strands are controlled by an single remote control with a variety of colors and modes. Each bulb is able to change colors

so the entire strand can be one color or various colors can be used for different seasons or events.

Home / Enbrighten Seasons Color-Changing Vintage LED Cafe Lights, 24 Bulbs, 48ft. Black Cord



Seasons

enbrighten  
café

**Congratulations on your recent purchase of Enbrighten Café Lights. Enbrighten Café Lights are designed to provide lighting for life with no bulbs to replace ever again! Purchase additional lights to form one continuous string up to 750ft!**

**IMPORTANT:** Before installation, please read all the warning statements included at the bottom of these instructions.

In order to ensure proper installation, please follow each step below:

### Step 1 - INITIAL SETUP

- Carefully unpack Café Lights from box. Remove the wire ties (see warning on reverse side).
- When installing Café Lights outside, a Ground Fault Circuit Interrupter (GFCI) receptacle should be used. Before installing, plug the Café Lights into the GFCI receptacle to ensure all lights work properly. **IMPORTANT:** Unplug the Café Lights prior to mounting.

### Step 2 - INSTALLING CAFÉ LIGHTS

- IMPORTANT:** Only mount Café Lights to a solid support structure such as joists, beams, studs or other solid mounting surfaces.
- Each Café Light is designed with a universal keyhole for mounting with lights hanging downward. Hardware options include screws, nails, zip ties, hooks and more (not included).
- Use keyhole ear tabs or keyholes to mount power supply.
- Guide wires in compliance with local electrical and building codes may also be used to support Café Lights.
- Once appropriate GFCI outlet location, mounting surface and hardware are determined, mount your Café Lights.
- When finished mounting, place the female receptacle cover firmly over the unused outlet and plug the male plug into the GFCI receptacle.



- Locate the remote. Remove the back cover of the remote and insert two AAA batteries (included) into the empty compartment. Be sure to note polarity. Do not mix old and new batteries. Firmly replace the back cover.
- To power on your Café Lights, press the red ON/OFF button located at the top of the remote.

**NOTE:** Keep remote indoors when not being used. Remote is not waterproof.

- Now that your lights are installed and powered on, take time to explore the following settings that are programmable via your remote:



### SAVE THESE INSTRUCTIONS

Simplify your Café Light experience by automating your on and off times and add a decorative shade to give your lights a distinctive style.

We recommend the following models, available at your select retailers or at [www.cafelights.com](http://www.cafelights.com):

**myTouchSmart Outdoor Timer (Plug-in)**  
Model #26898



The myTouchSmart plug-in timer is the easiest to set timer on the market. Simply select your time and go.

**myTouchSmart Timer (In-Wall)**  
Model #26893



The myTouchSmart in-wall timer provides easy-set controls if your receptacle is controlled by a switch.

**GE Bluetooth Outdoor Smart Switch (Plug-in)**  
Model #13868



Wirelessly schedule and control outside lights or other devices from your smartphone or tablet.

**GE Bluetooth Smart Switch (In-Wall)**  
Model #13869



The GE Bluetooth In-Wall version provides the same Bluetooth control as your receptacle is controlled by a switch.

**Enbrighten Café Lens Shade Stainless Steel**  
Model #35917



Express your unique style with a variety of shapes and finishes of Enbrighten Café decorative shades.

**Enbrighten Café Lens Shade Oil-Rubbed Bronze**  
Model #35877



Express your unique style with a variety of shapes and finishes of Enbrighten Café decorative shades.

### Single Color Selection Feature

Find your favorite color on the remote's color pad and simply push that button to set all of the lights the same color.

**NOTE:** Within this feature, you can also press the dimming button to adjust from 10 different light levels. The dimming option is only available for single- and dual-color selection.

### Dual-Color Selection Feature

- A - Press Color 1, then select a color from the color pad to set the color of every other bulb starting with the first bulb.
- B - Press Color 2, then select a color from the color pad to set the color of every other bulb starting with the second bulb.
- C - During the selection feature, press the dimming button to choose one of 10 different light levels.

### Strobe Selection Feature

By pressing the Strobe button, the lights will strobe through all of the colors in a random pattern.

### Fade Selection Feature

By pressing the Fade button, the lights will fade in and out through all of the colors in a random pattern.

### Modes Selection Feature

Press the "modes" button repeatedly to cycle through the following preset modes:

- Twinkle •Multi Fade •Christmas •St. Patrick's Day
- Red, white and blue •Fall •Spring •Multi

### Timer Selection Feature

- A - By pressing the 2 Hour Timer button, you will activate a two-hour countdown until lights turn off.
- B - By pressing the 4 Hour Timer button, you will activate a four-hour countdown until lights turn off.
- 10 - Once you have customized your settings and are ready to power off your lights, press the red ON/OFF button located at the top of the remote.

**NOTE:** Your Café Lights will automatically remember the last customized settings and will turn back on in the same mode and/or color scheme.

### Step 3 - INSTALLING MULTIPLE CAFÉ LIGHT SETS

Extend the length of your lights by connecting more than one strand together to form one continuous string up to 750ft! Simply follow the above installation steps, making sure each connection between strands is secure and that the end female receptacle is securely covered using the receptacle cover.

Available in multiple lengths at [www.cafelights.com](http://www.cafelights.com)

Length, feet	Bulbs	Model Number
24	12	37791
36	18	36632
48	24	37790

See below for electrical rating.

### Step 4 - REMOVING CAFÉ LIGHTS

- Always unplug Café Lights from their receptacle prior to removing.
- Carefully remove each light individually from the mounting hardware.
- Store lights in a dry location.

**NOTE:** For your safety, never pull or jerk lights from mounting hardware.

Version 7  
4/9/19



### Important — please read:

Refer to the manual or visit [www.enbrighten.com](http://www.enbrighten.com) for limitations and restrictions on warranties and the product registration information.

**WARNING:** When using outdoors use portable luminaires, basic safety precautions should always be followed to reduce the risk of fire, electrical shock, and personal injury, including the following:

- Ground Fault Circuit Interrupter (GFCI) protection is to be provided on the circuit(s) and/or outlet(s) to be used for the wet location portable luminaires. Receptacles are available having built-in GFCI protection and are also to be used for the measure of safety.
- Use only with an extension cord for outdoor use, such as an extension cord of cord type SEW, SEDOW, SOW, SODOW, STW, STOW, STOOK, SLEW, SLEOW, SLEODOW, SLEW, SLEOW, SLEODOW, SLEW, SLEOW, SLEODOW.
- **WARNING:** Keep these bags away from babies and children. Do not use in cribs, beds, carriages, or playpens. The thin film may cling to nose and mouth and prevent breathing.

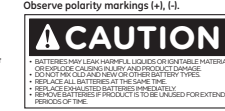
**WARNING:** Ensure the Café Light's receptacle cover is firmly installed and well sealed when not being used to connect additional strings.

**Caution:** The manufacturer is not responsible for any radio or TV interference caused by unauthorized modifications to the equipment. Such modifications could void the user's authority to operate the equipment.

**NOTE:** This equipment has been tested and found to comply with the limits for a Class B digital device, which provides reasonable protection against harmful interference in a residential installation. This equipment generates, uses and can radiate radio frequency energy and, if not installed and used in accordance with the instructions, may cause harmful interference to radio communications. However, there is no guarantee that interference will not occur in a particular installation. If this equipment does cause harmful interference to radio or television reception, which can be determined by turning the equipment off and on, the user is encouraged to try to correct the interference by one or more of the following measures:

- Reorient or relocate the receiving antenna.
- Increase the separation between the equipment and receiver.
- Connect the equipment into an outlet on a circuit different from that to which the receiver is connected.
- Consult the dealer or an experienced radio/TV technician for help.

Requires AAAA batteries. Observe polarity markings (+), (-).



### WARNING

**RISK OF ELECTRIC SHOCK**

- RECEPTACLE OUTLET IS USED FOR POWERING CAFFÉ LIGHTS. ALWAYS USE WITH ALL NATIONAL ELECTRICAL CODE COMPLIANCE REQUIREMENTS.
- DO NOT USE ONLY ON GFCI PROTECTED CIRCUITS.
- DO NOT USE WITH DIMMER SWITCHES.
- CAFFÉ LIGHTS ARE A WET LOCATION PRODUCT AND ARE NOT SERVICEABLE PARTS.
- DO NOT USE WITH EXTENSION CORDS NEAR WATER OR OTHER WETTED AREAS.
- DO NOT USE WITH DIMMER SWITCHES.
- KEEP PLUGS AND RECEPTACLES DRY.
- AVOID DAMAGE TO THE CORDS AND LAMP ASSEMBLY DURING INSTALLATION. REMOVAL OF CORDS OR DAMAGE CAUSED BY OUTDOOR EXPOSURE TO THE ELEMENTS.
- REPLACE ANY DAMAGED CAFFÉ LIGHT STRINGS OR CORDS IMMEDIATELY. WHENEVER CAFFÉ LIGHTS ARE UNPLUGGED FROM POWER SUPPLY, ALWAYS:
- CAFFÉ LIGHTS SHOULD BE INSTALLED OUT OF THE REACH OF CHILDREN. NEVER ALLOWING CHILDREN TO PLAY WITH THEM.
- ALL RECOMMENDED TESTING GFCI CIRCUITS AND RECEPTACLES EVERY MONTH TO ENSURE PROPER OPERATION.
- DO NOT OPERATE WITHOUT BULBS SECURELY SCREWED IN.

**RISK OF FIRE**

- CAFFÉ LIGHTS ARE DESIGNED TO BE INSTALLED WITHIN THEIR DESIGNATED WET LOCATION. DO NOT INSTALL CAFFÉ LIGHTS BY USING THE MAIN ELECTRICAL PANEL OF THE INDIVIDUAL.
- CAFFÉ LIGHTS ARE DESIGNED TO BE USED WITH THE FOLLOWING ELECTRICAL PLUGS AND RECEPTACLES TO A MAXIMUM DISTANCE OF 750 FEET:
- CAFFÉ LIGHT INTERCONNECTING RECEPTACLES OR RECEPTACLES FOR THE PURPOSE OF CONNECTING CAFFÉ LIGHT STRINGS. DO NOT USE CAFFÉ LIGHT RECEPTACLES FOR ANY OTHER ELECTRICAL PURPOSE.
- DO NOT MOUNT CAFFÉ LIGHTS IN ANY POSITION WHERE THE BULBS ARE IN CONTACT WITH ANY FLAMMABLE MATERIALS.
- CAFFÉ LIGHTS ARE NOT TO BE USED IN ANY POSITION WHERE THE BULBS ARE IN CONTACT WITH ANY FLAMMABLE MATERIALS. CAFFÉ LIGHTS ARE NOT SUSCEPTIBLE TO REPETITIVE DAMAGE CAUSED BY ENVIRONMENTAL CONDITIONS SUCH AS WIND, RAIN, AND HAIL.
- READ INSTRUCTIONS FOR INSTALLATION IN CEILING, SOFFITS, CABINETS, ATTIC, OR OTHER ENCLOSED SPACES.

**MADE IN CHINA**  
Distributed by: Jacob Products Company LLC  
10 E. Memorial Rd., Ocala, FL 32764  
This Jacob product comes with a 2-year limited warranty. Visit [www.enbrighten.com](http://www.enbrighten.com) for warranty details.  
Questions? Contact our U.S.-based Consumer Care at 1-800-848-8488 between 9AM - 5PM CST.  
Pat. US D637420 and D786311 | [www.cafelights.com](http://www.cafelights.com)

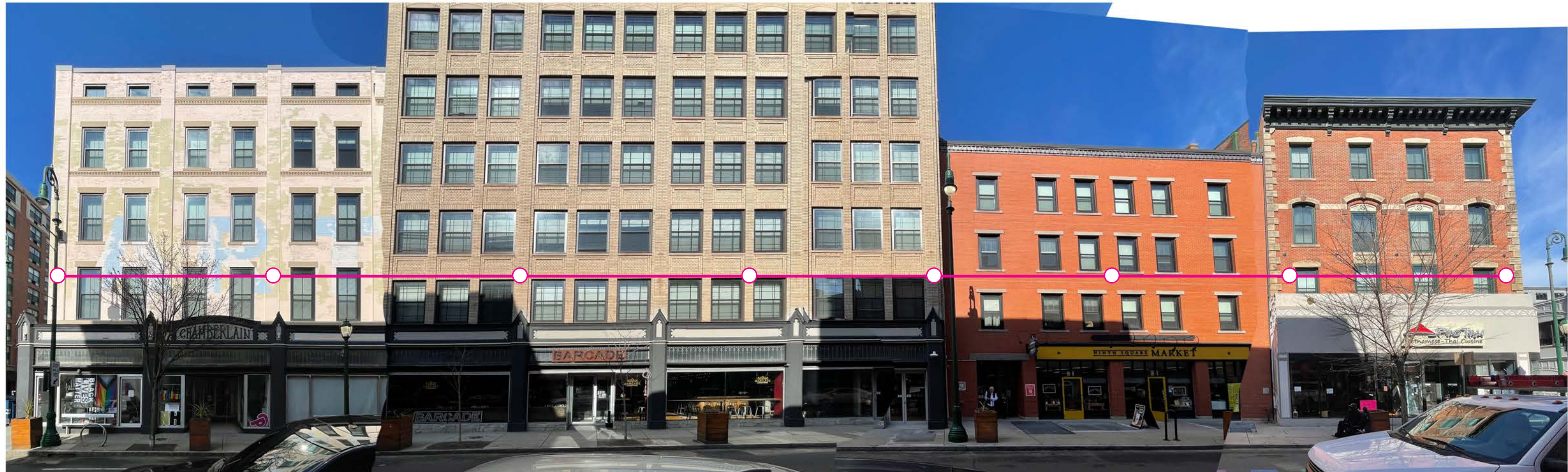
Electrical Ratings  
Input: 120V, 50/60 Hz  
Max. Input, Watt, Max. Location Use

Model #	Input, Watt	Max. Location Use
35917	8W	Wet
35877	8W	Wet
35917	8W	Wet
35877	8W	Wet
35917	8W	Wet
35877	8W	Wet
35917	8W	Wet
35877	8W	Wet
35917	8W	Wet
35877	8W	Wet

# Orange Street Lighting Project

## Anchor locations North Side:

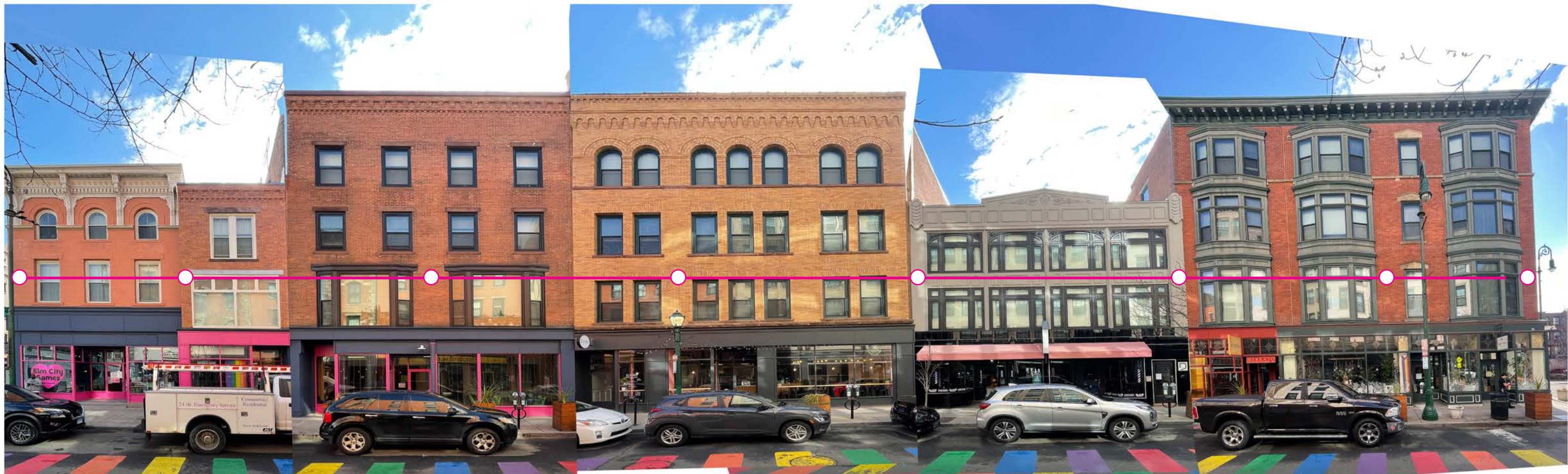
Below is a visual map indicating the proposed location of each anchor on each building along the North side of Orange street



# Orange Street Lighting Project

## Anchor locations South Side:

Below is a visual map indicating the proposed location of each anchor on each building along the North side of Orange street



# Orange Street Lighting Project

## Hardware:

The following is a list of hardware and specifications for the proposed cable and suspension system

[Product Categories](#) / [Fasteners](#) / [Anchors](#) / [Adhesive Anchors](#) / RED HEAD Acrylic Adhesive: Acrylic, 9.11...



## RED HEAD Acrylic Adhesive: Acrylic, 9.11 fl oz Container Size, Block/Brick/Concrete/Masonry

Item 53TX69

Mfr. Model A7P-10

Brand **RED HEAD**

Resin Type **Acrylic**

Compatible Material **Block; Brick; Concrete; Masonry**

Compatible Anchor Size

**#3; #11; 1-1/2 in; 1-1/4 in; 1 in; #4; 1/2 in; 1/4 in; 3/4 in; 3/8 in; 5/8 in; 3/8 in; #5; #6; #7; #8; #9; #10**

Mixing Ratio **10:1**

Full Cure Time **45 min**

Working Time **5 min**

Minimum Performance Temperature **14 °F**

Maximum Performance Temperature **110 °F**

ICC Approved for Cracked Concrete **Yes**

Product Description

Acrylic anchor adhesives bond threaded rods, anchors, and rebar to cured concrete and masonry surfaces. They are easier to dispense than epoxy, work in wet or water-filled openings, and set quickly in most temperatures.

ICC Approved for Un-Cracked Concrete **Yes**

Sub-brand **Trubolt**

Manufacturer Part Number **A7P-28**

Container Type **Cartridge**

Container Size **26.84 fl oz**

Display Qty **1**

Display Sell UOM **EA**

Includes **Mixing Nozzle**

Standards **ICC-ES ESR-3903; ICC-ES ESR-3951**

UNSPSC **31162105**

Country of Origin **France (subject to change)**

# Orange Street Lighting Project

## Hardware:

The following is a list of hardware and specifications for the proposed cable and suspension system

**E-Rigging** Search...   Login / Signup My account  0



Cable Railing  Rigging Department  Marine Department  Stainless Steel  Made in USA Products



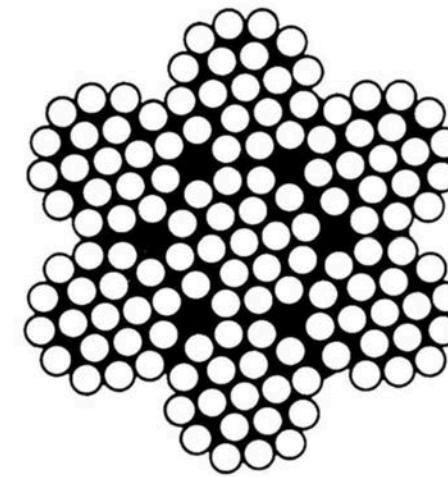
### 1/4" X 500', 7x19, Type 316 Stainless Steel Cable

★★★★★ No reviews

SKU: 22520050

Size: 1/4" X 500'

1/8" X 200'	1/8" X 500'	3/16" X 200'
3/16" X 500'	1/4" X 200'	<b>1/4" X 500'</b>
5/16" X 200'	3/8" X 200'	3/8" X 500'



Name	Value
Length:	500 ft
Cable Diameter:	1/4 inches
WLL (5:1):	1175 lbs
Breaking Load:	4900 lbs
Weight (per foot):	0.11 lbs

### Description

Cable Cannot Be Returned

1/4" diameter 7x19 type 316 stainless steel cable. 500 ft reel constructed of 7 strands and 19 wires per strand. 7x19 construction makes this cable very flexible. Breaking strength is 4900 lbs and working load limit is 1175 lbs. Cable weighs 0.11 pounds per foot and adheres to federal specification RR-W-410H. Standard Reel Size (Flange Diameter x Height): 12 x 6 inches. Steel cable is often referred to as Aircraft cable, but this cable is not rated for aircraft use. We also carry common accessories for cable such as Wire Rope Clips, Wire Rope Thimbles, and Sleeves.

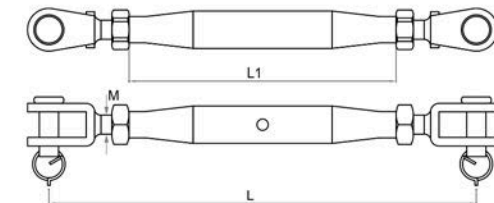
Cable Diameter	Breaking Strength	Working Load Limit (5:1) Design Factor
1/8"	1,670 lbs	334 lbs
3/16"	3,565 lbs	713 lbs
<b>1/4"</b>	<b>4,900 lbs</b>	<b>1,175 lbs</b>
5/16"	8,825 lbs	1,765 lbs
3/8"	11,760 lbs	2,352 lbs

# Orange Street Lighting Project

## Hardware:

The following is a list of hardware and specifications for the proposed cable and suspension system

The screenshot shows the E-Rigging website interface. At the top, there is a navigation bar with the E-Rigging logo, a search bar, and links for 'Login / Signup My account' and a shopping cart with 0 items. Below the navigation bar, there are breadcrumb links: 'Marine Department > Marine Rigging Fittings > Stainless Turnbuckles > Stainless Pipe Style Jaw x Jaw Turnbuckles'. The main product image shows a stainless steel turnbuckle with two jaw ends. To the right of the image, the product title is '5/16" x 4" Stainless Steel Pipe Style Jaw x Jaw Turnbuckle'. Below the title, there is a star rating of 5 stars and '1 review'. The SKU is 51609215. The size is listed as '5/16" x 4"'. There are several size selection buttons: '3/16" x 3"', '1/4" x 3-1/2"', '5/16" x 4"' (highlighted in green), '3/8" x 5"', and '1/2" x 6"'. The price is \$13.69 and the stock status is '120 In Stock'. To the right of the product image, there is a technical drawing of the turnbuckle with dimensions L1 and L, and a table of specifications.



Name	Value
Size	5/16 inches UNC
Closed Pin to Pin (L)	6.3 inches
Body Length (L1)	4.13 inches
Thread (M)	5/16 inches UNC

Size	L(inch)	L1(inch)	M(thread)	Weight(lb)	WLL.(lb)
3/16"UNC	4.53	3.15	3/16"UNC	0.09	412.5
1/4"UNC	5.59	3.54	1/4"UNC	0.2	770
5/16"UNC	6.3	4.13	5/16"UNC	0.34	1210
3/8"UNC	7.87	4.92	3/8"UNC	0.57	1896
1/2"UNC	9.65	5.91	1/2"UNC	1.03	2750

# Orange Street Lighting Project

## Hardware:

The following is a list of hardware and specifications for the proposed cable and suspension system

**E-Rigging** Search... Login / Signup My account Cart



- Cable Railing
- Rigging Department
- Marine Department
- Stainless Steel
- Made in USA Products

Stainless Steel > Stainless Mooring Springs



### 7mm x 390mm Stainless Steel Mooring Spring

No reviews

Sale

SKU: 51647442

Size: 7mm x 390mm

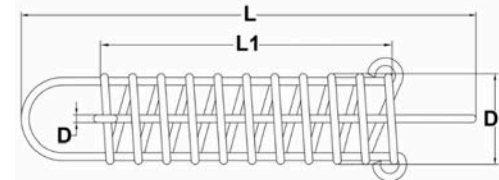
6mm x 320mm

7mm x 320mm

7mm x 390mm

Price: **\$32.11** \$59.89

Stock: 67 In Stock



Name	Value
Wire Diameter (D):	7 millimeters
Overall Length (L):	390 millimeters
Overall Diameter (D1):	70 millimeters
Spring Length (L1):	270 millimeters
Max Compression Load:	530 lbs
Recommended Max Hull Length:	32.81 ft
Recommended Max Hull Weight:	8157 lbs

L	D1	L1	Max Compression Load (lbs)	Recommended Max Hull Length (ft)	Recommended Max Hull Weight (lbs)
270	50	180	210	19.69	1763
270	60	180	260	26.25	4850
320	60	220	310	26.25	4850
370	60	255	350	26.25	4850
320	70	220	440	32.81	8157
390	70	270	500	32.81	8157



# Orange Street Lighting Project

## Hardware:

The following is a list of hardware and specifications for the proposed cable and suspension system

**E-Rigging** Search... Login / Signup My account Cart



Cable Railing ▾ Rigging Department ▾ Marine Department ▾ Stainless Steel ▾ Made in USA Products ▾

Marine Department > Marine Rigging Fittings > Stainless Eye Bolts > **Stainless Shoulder Eye Bolts**



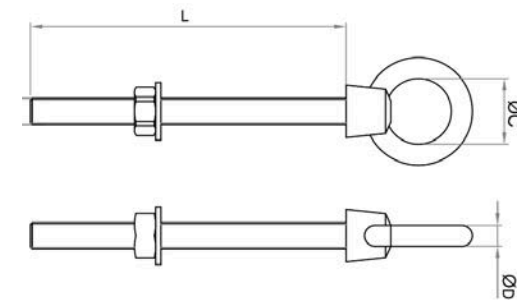
### 3/8" x 5" Stainless Steel Shoulder Eye Bolt

★★★★★ No reviews

SKU: 51611220

Size: 3/8" x 5"

- |                  |                |                           |
|------------------|----------------|---------------------------|
| 1/4" x 1-9/16"   | 1/4" x 2"      | 1/4" x 2-3/8"             |
| 1/4" x 3-3/16"   | 1/4" x 4"      | 5/16" x 2-3/8"            |
| 5/16" x 4"       | 3/8" x 3-3/16" | 3/8" x 4"                 |
| <b>3/8" x 5"</b> | 3/8" x 6"      | 1/2" x 1-1/2"<br>SOLD OUT |
| 1/2" x 1-3/4"    | 1/2" x 3-3/16" | 1/2" x 6"                 |



Name	Value
Size	3/8 inches x 5 inches
Eye Diameter (C)	0.98 inches
Eye Thickness (D)	0.31 inches
Thread Length (L)	4.92 inches
Thread Diameter (M)	3/8 inches

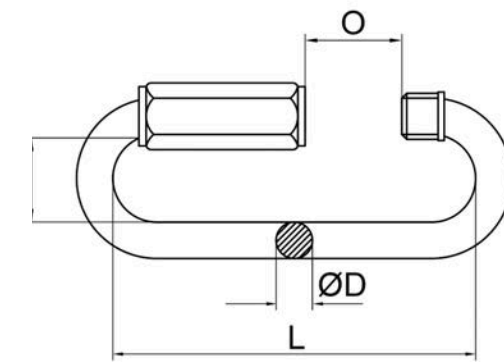
Size	ØC(inch)	ØD(inch)	L(inch)	M(thread)	Weight(lb)	WLL.(lb)
3/8" x 5"	0.98	0.31	4.92	3/8"	0.28	1430
3/8" x 6"	0.98	0.31	5.9	3/8"	0.31	1430
1/2" x 1-3/4"	1.18	0.39	1.77	1/2"	0.4	1925
1/2" x 3-3/16"	1.18	0.39	3.15	1/2"	0.47	1925
1/2" x 6"	1.16	0.39	5.9	1/2"	0.6	2000
5/8" x 6"	1.38	0.49	5.9	5/8"	1	3200

# Orange Street Lighting Project

## Hardware:

The following is a list of hardware and specifications for the proposed cable and suspension system

The screenshot shows the E-Rigging website interface. At the top, there is a navigation bar with the E-Rigging logo, a search bar, and links for 'Login / Signup My account' and 'Cart'. Below this is a secondary navigation bar with a '20 YEARS' anniversary logo and several category dropdown menus: 'Cable Railing', 'Rigging Department', 'Marine Department', 'Stainless Steel', and 'Made in USA Products'. The breadcrumb trail indicates the product location: 'Marine Department > Marine Soft Rope & Fittings > Rigging Fittings > Quick Links > Stainless Steel Big Opening Quick Link'. The main product image shows a stainless steel quick link. To the right of the image, the product title is '5/16" Stainless Steel Big Opening Quick Link', followed by a 5-star rating and '1 review'. The SKU is 32561015. The size selection area shows '5/16"' as the selected option among other sizes (3/16", 1/4", 3/8", 1/2"). The price is \$8.99 and the stock status is '244 In Stock'. A quantity selector is set to 1.



Name	Value
Size	5/16 inches
Inside Width (B)	0.68 inches
Link Diameter (D)	0.31 inches
Inside Length (L)	2.91 inches
Link Opening (O)	0.7 inches

Size	B(inch)	ØD(inch)	L(inch)	O(inch)	Weight(lb)	WLL.(lb)
3/16"	0.51	0.19	2.04	0.55	0.05	649
1/4"	0.57	0.23	2.36	0.62	0.09	873
5/16"	0.68	0.31	2.91	0.7	0.2	1522
3/8"	0.8	0.39	3.34	0.78	0.26	2296
1/2"	0.92	0.47	3.85	0.9	0.53	4800

# Orange Street Lighting Project

## Hardware:

The following is a list of hardware and specifications for the proposed cable and suspension system

**E-Rigging** Search... Login / Signup My account Cart



Cable Railing ▾ Rigging Department ▾ Marine Department ▾ Stainless Steel ▾ Made in USA Products ▾

Marine Department > Marine Soft Rope & Fittings > Rigging Fittings > Quick Links > **Stainless Steel Delta Quick Link**



### 5/16" Stainless Steel Delta Quick Link

★★★★★ No reviews

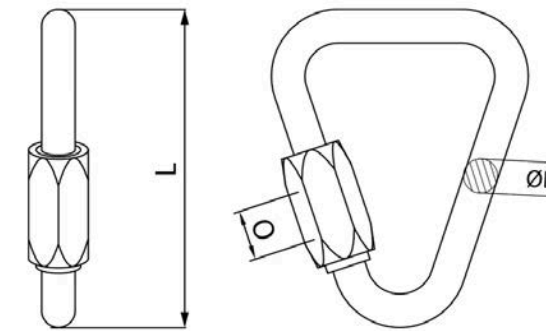
SKU: 32562015

Size: 5/16"

Price: **\$8.99**

Stock: ● 50 In Stock

Quantity:



Name	Value
Size	5/16 inches
Link Diameter (D)	5/16 inches
Overall Length (L)	2.87 inches
Link Opening (O)	0.39 inches

Size	ØD(inch)	L(inch)	O(inch)	Weight(lb)	WLL.(lb)
3/16"	3/16"	1.89	0.26	0.07	400
1/4"	1/4"	2.2	0.3	0.09	750
5/16"	5/16"	2.87	0.39	0.2	1400
3/8"	13/32"	3.43	0.47	0.35	2100
1/2"	1/2"	4.09	0.59	0.64	3200

# Orange Street Lighting Project

## Hardware:

The following is a list of hardware and specifications for the proposed cable and suspension system

**E-Rigging** Search...   Login / Signup My account  0



Cable Railing ▾ Rigging Department ▾ Marine Department ▾ Stainless Steel ▾ Made in USA Products ▾



### 1/4" Type 316, Stainless Steel Cast Wire Rope Clip

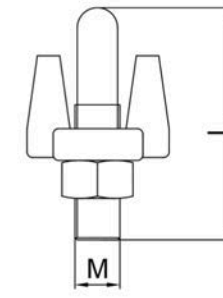
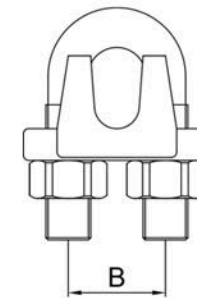
★★★★★ 3 reviews ▾

SKU: 51604220

Size: 1/4"

3/32"	1/8"	3/16"
1/4"	5/16"	3/8"
1/2"	5/8"	3/4"

Price: **\$2.39**



Name	Value
Cable Size	1/4 inches
U-Bolt Width (B)	0.55 inches
Overall Length (L)	1.26 inches
M (Thread)	M6
Minimum Number of Clips Required	2
Torque	15 ft/lb
Amount of Wire to Turn Back	4.75 inches

Cable Size	Minimum Number of Clips Required	Recommended Wrench Size	Torque (ft/lb)**	Amount of Wire to Turn Back	B (inch)	L (inch)	M (thread)	Weight (lb)
3/32"	2	7/32"	1.5	3.25	0.28	0.69	M3	0.01
1/8"	2	1/4"	4.5	3.25	0.31	0.83	M3	0.02
3/16"	2	5/16"	7.5	3.75	0.47	1.14	M5	0.05
1/4"	2	3/8"	15	4.75	0.55	1.26	M6	0.08
5/16"	2	1/2"	30	5.25	0.69	1.57	M8	0.17
3/8"	2	11/16"	45	6.5	0.83	1.97	M10	0.34

# Orange Street Lighting Project

## Installation

### Budget:

Materials and operational supplies:	\$10,455.43
Equipment rentals:	\$2,680.02
Labor for assembly and installation:	\$9,763.95