

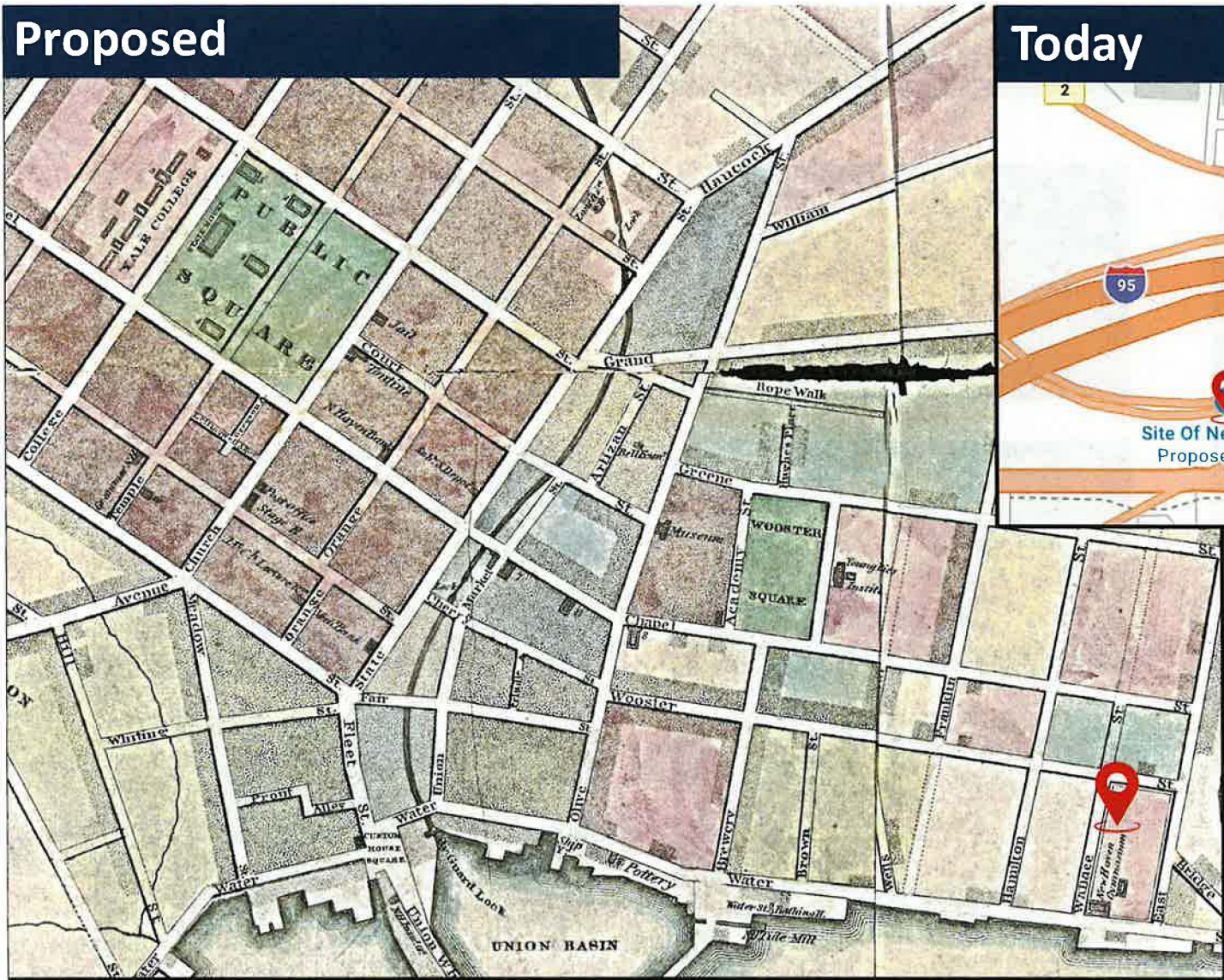
1831 to Now: Building the Northeast's First HBCU in New Haven



**TOGETHER
NEW HAVEN**

Proposed in 1831, Established in 2031: HBCU satellite | Grow talent, Grow opportunity, Grow Connecticut
Application for Community Investment Planning Funds, Round 9 | June 2026

Proposed



Today



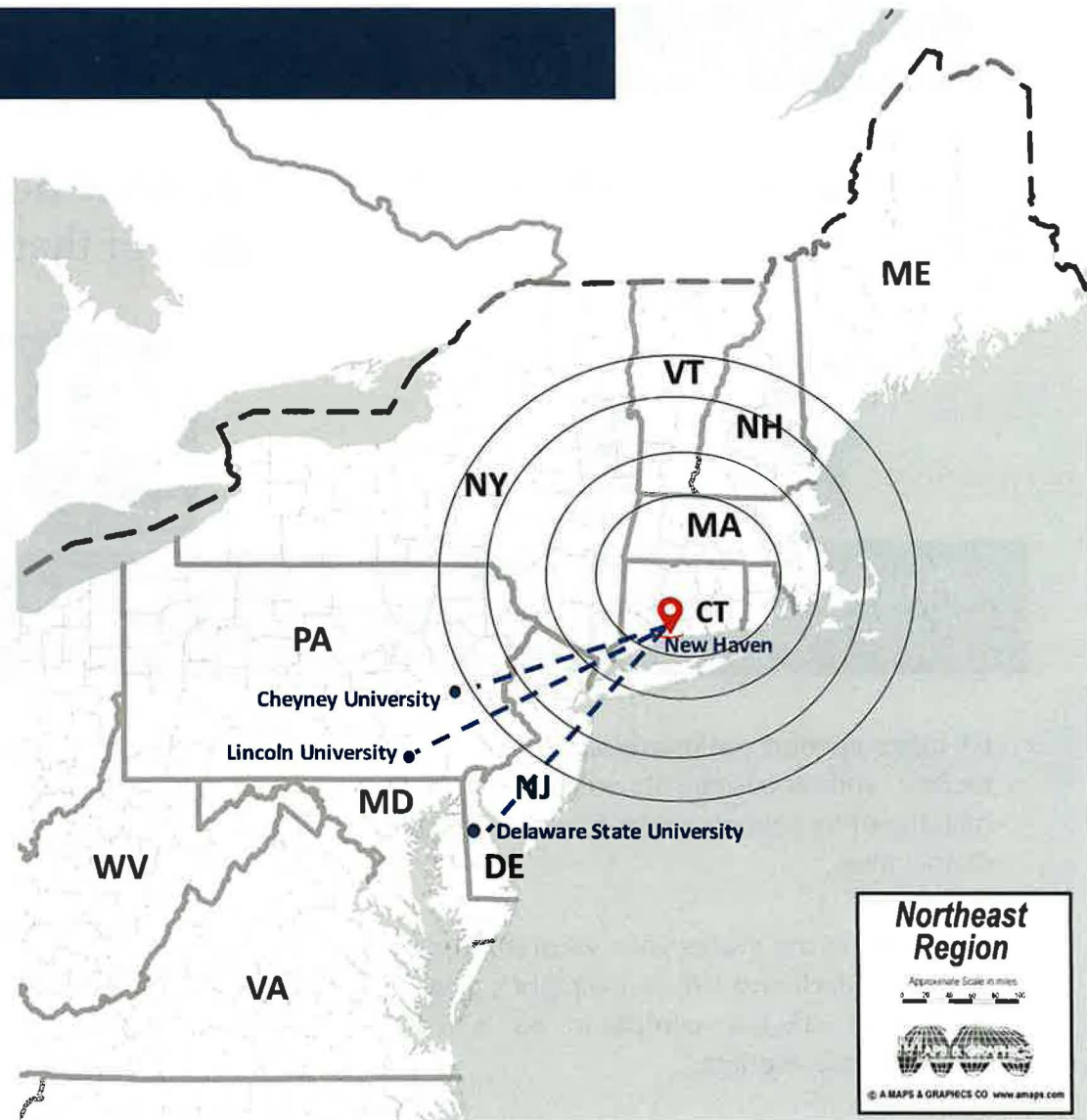
Northeast is an HBCU Desert

200 Years AFTER the 1st HBCU was proposed
in New Haven, CT:

New England has no HBCUs

Nearest options: 200–250 miles away.

- *Cheyney – 4 hrs*
- *Lincoln – 4.2 hrs*
- *Delaware State – 4.6 hrs*
- Demand exists; distance exports talent
- 38%+ of residents hold a bachelor's or higher, 11% are without a diploma, dropping from 26% in 2000 (Vision 2034)



The Solution: HBCU-Centered STEM Consortium in New Haven

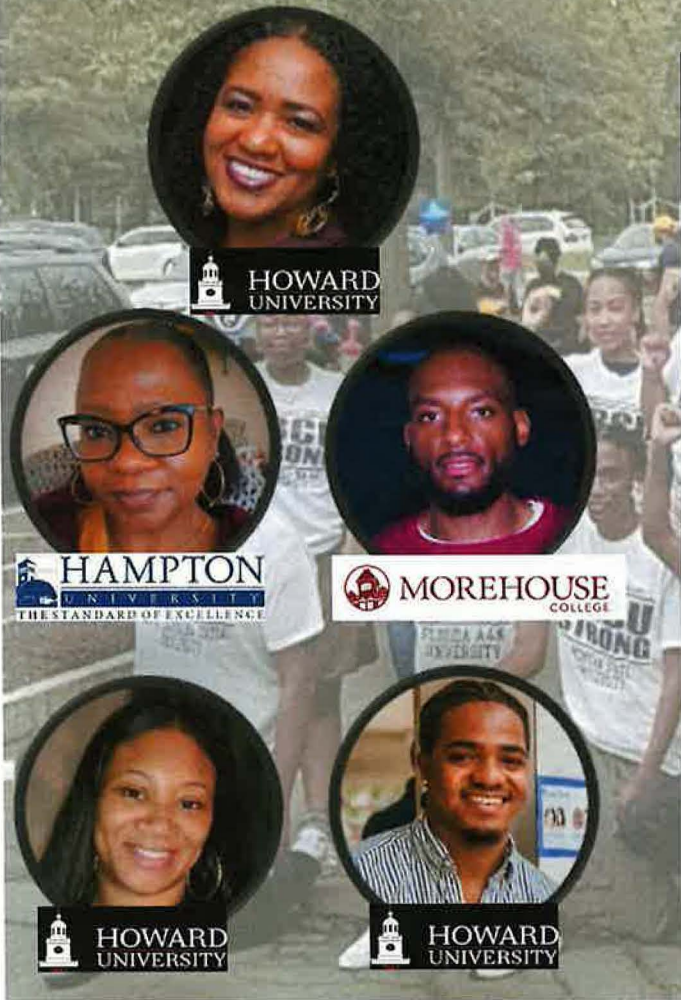
Today, we propose to turn this history into a forward engine for education, good jobs, and inclusive wealth in New Haven by establishing an HBCU Satellite Campus hosted at SCSU, connected through a regional college consortium with cross-registration across partners.

The HBCU would operate as the anchor hub for:

- Culturally affirming, workforce-aligned programs in CT growth sectors: biotech, quantum, aerospace, health, tech.
- Consortium cross-registration so students can take the best-fit specialized courses across campuses while staying enrolled locally.
- Stackable credentials + career pathways (certificates, bachelor's, select graduate), backed by paid co-ops/internships/apprenticeships and employer-linked hiring.
- Fill program gaps with HBCU faculty to launch and teach courses not currently offered regionally but needed for degree completion and workforce demand.



CT HBCU Alumni Network, Inc.



Our Impact

\$250,000

Avg amount in scholarships awarded since 2019

200+

students supported through HBCU Send-Off

Statewide HBCU Send-Off has benefited about 40 students annually with celebrations, resources, & transition support.

5+

Years of statewide HBCU programming

College fairs, tours, events, and outreach connecting CT students to HBCU opportunities since August 2019.

Statewide HBCU Community

of alumni, students, and allies

A growing network of HBCU alumni across multiple institutions working together on college and career readiness, health & wellness, economic empowerment, and policy advocacy.

COMMUNITY ACTIVITIES



4TH ANNUAL **HBCU** Send-Off Celebration 2022

Celebrating HBCU-Bound CT High School Seniors

JULY 17TH @ 3PM

Decorate your car representing your FAVORITE HBCU and join our Car Parade!

An Outdoor Event at **CONN-CAT Science Park** New Haven, CT

SPONSORS: ConnCAT, BA, SWBC, Home Depot, KeyBank, American Eagle, and others.

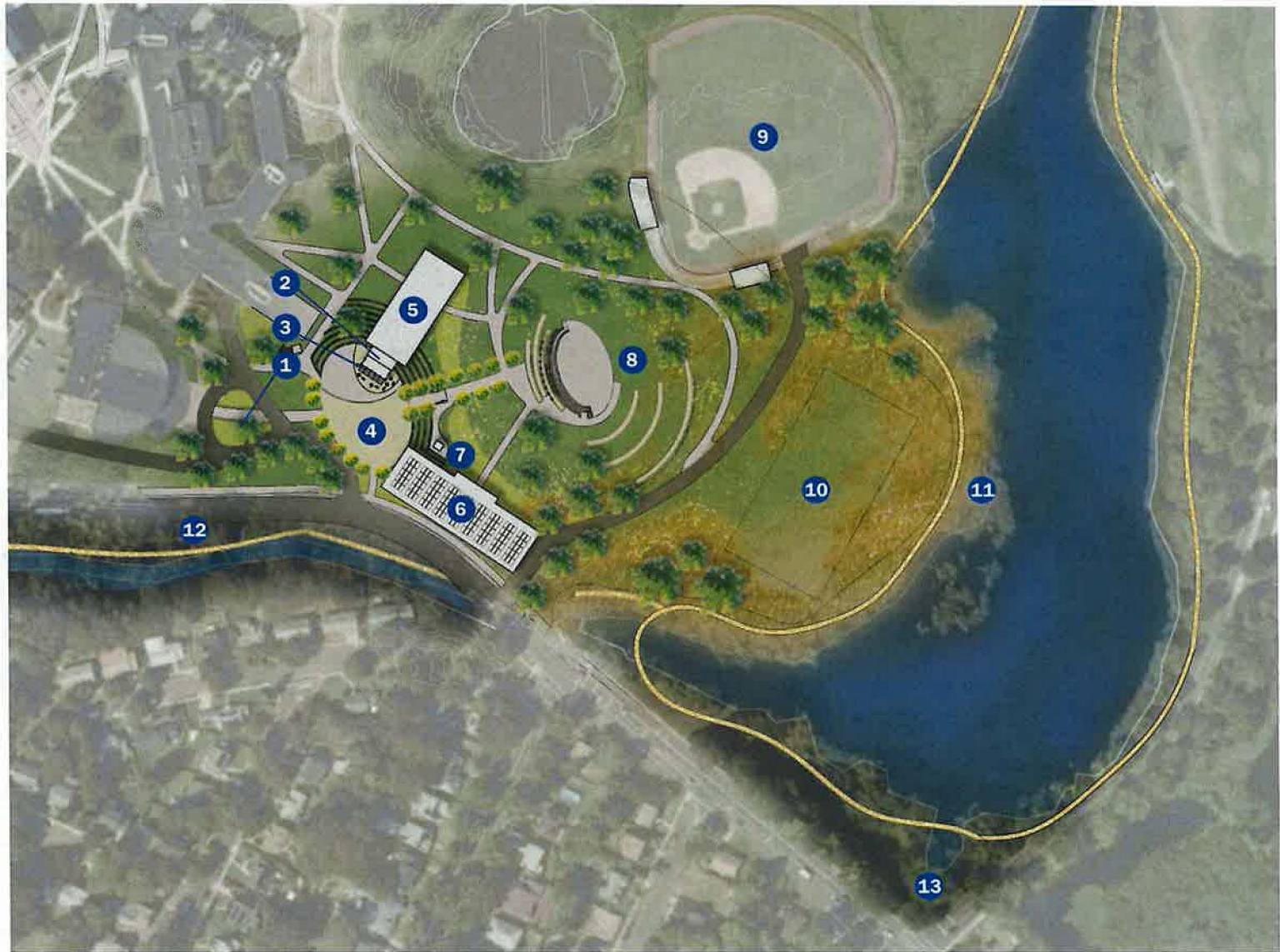


HBCU X SCSU CAMPUS INNOVATION CLUSTER KEY PLAN

- 1** LYMAN PERFORMING ARTS CENTER PLAZA
- 2** ETHNIC CULTURE CENTER & MUSEUM
- 3** SOUL CAFE COFFEE AND STUDY SPACE
- 4** HBCU INNOVATION QUAD
- 5** RESEARCH & OFFICE BUILDING
3 FLOORS; 40,000 SF
- 6** INNOVATION & LAB BUILDING
4 FLOORS + 2 SUBFLOORS
50,000 SF LAB SPACE + PARKING [250 CARS]
- 7** HBCU CLOCKTOWER
- 8** THE YARD
- 9** THE BALLPARK AT SCSU
- 10** SOCCER FIELD & WETLANDS
- 11** BEAVER POND NATURE WALK
- 12** CRESCENT STREET BROOK NATURE WALK



- 13** HBCU X SCSU CAMPUS ENTRANCE MONUMENT
1. AT FITCH & CRESCENT
2. AT FOURNIER & CRESCENT





PIRIE
ASSOCIATES
ARCHITECTS

Infrastructure: Ecosystem of Higher Education & Innovation Clusters



Greater New Haven already hosts six higher education institutions. SCSU has land and existing facilities that can be expanded and improved to support an HBCU campus and shared amenities.



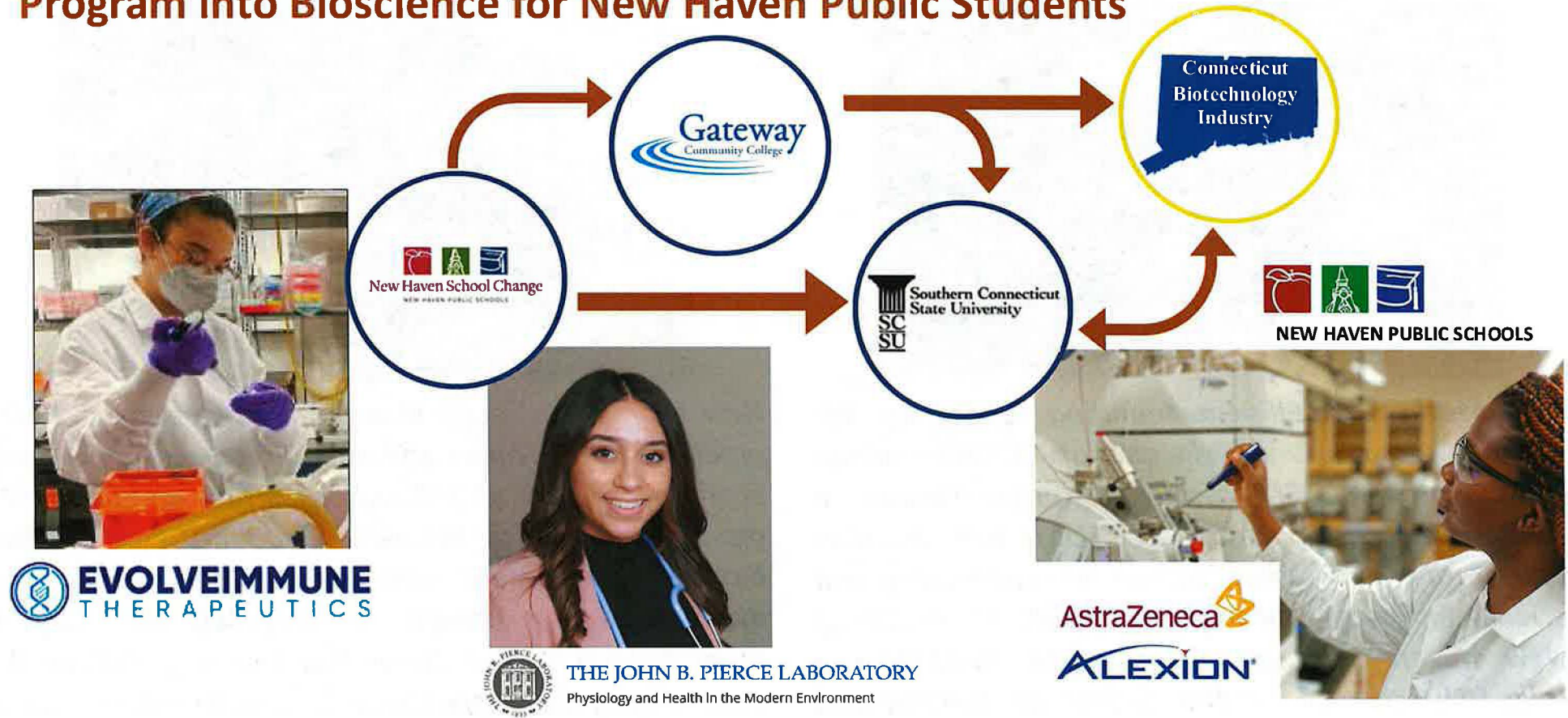
Who Will These Projects Impact?



Proposed campus is an area **highly diverse** and has been traditionally underserved for infrastructure improvements in the past. Focusing on underserved communities, the City seeks to re-invest in areas, which historically have been plagued by economic disinvestment, blight, and racial inequality. Thus, the City is seeking funding to explore the future capital improvements which will promote economic activity, development opportunities, and neighborhood livability, vitality, and vibrancy in communities that are:

Community Demographics	New Haven	Dwight	Dixwell	Beaver Hills	Edgewood	4-Neighborhood Average
Black or African American	34%	39%	56%	56%	50%	50%
Hispanic or Latin American	30%	23%	18%	15%	20%	19%
Asian	5%	9%	4%	3%	4%	5%
White	29%	24%	19%	22%	21%	22%
Other	2%	5%	3%	4%	5%	4%

Proof of Concept: Collegiate Partnership Programming - BioCity Pipeline Program into Bioscience for New Haven Public Students



Thank You / Discussion

CITY OF NEW HAVEN

JUSTIN ELICKER, MAYOR

BOARD OF ALDERS

**TOGETHER
NEW HAVEN**

