



I-91 Neighborhood Reconnection Initiative

Planning grant request: USDOT's Reconnecting Communities Pilot Grant

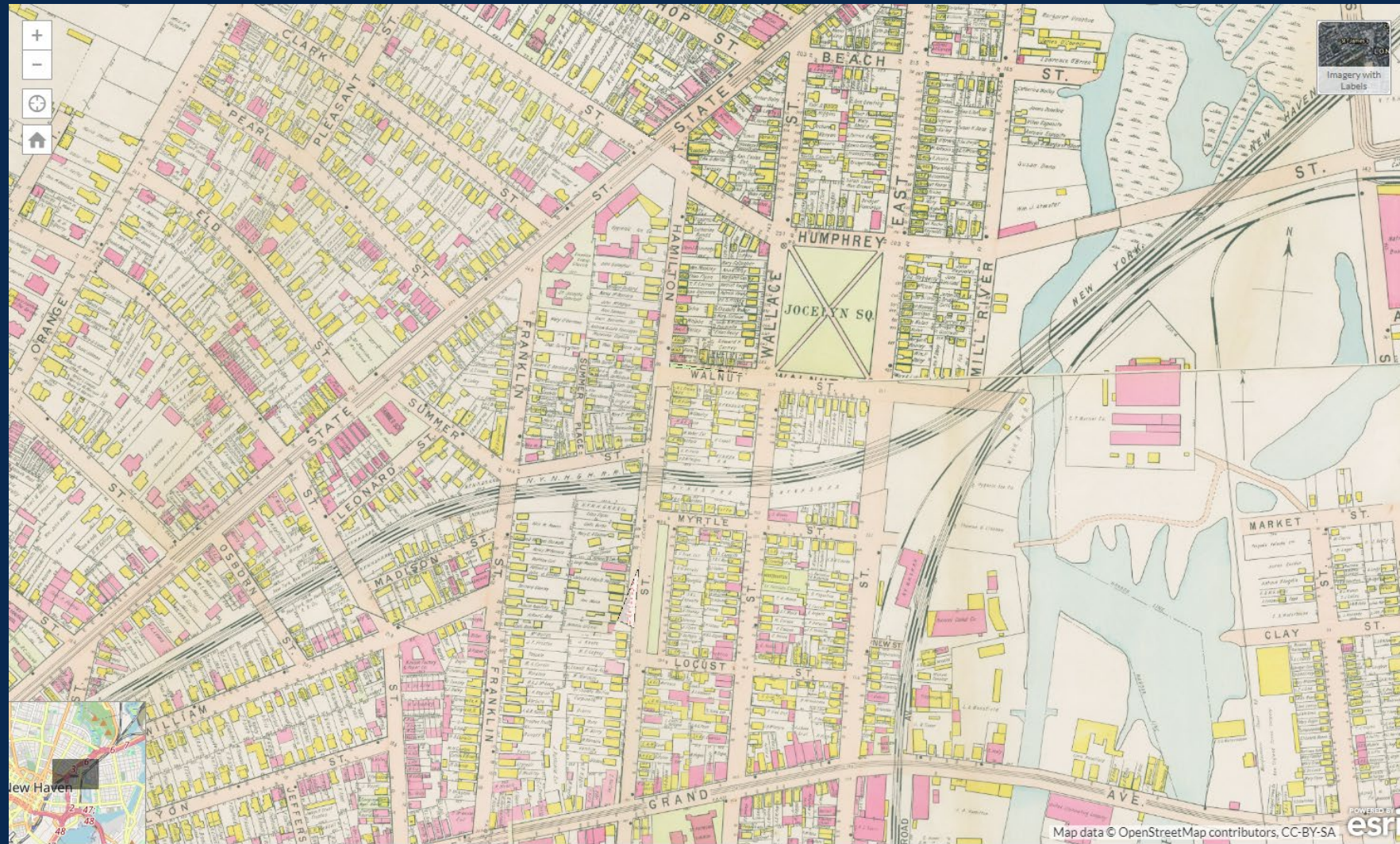
Sept. 23, 2024

USDOT's Reconnecting Communities Pilot Grant...

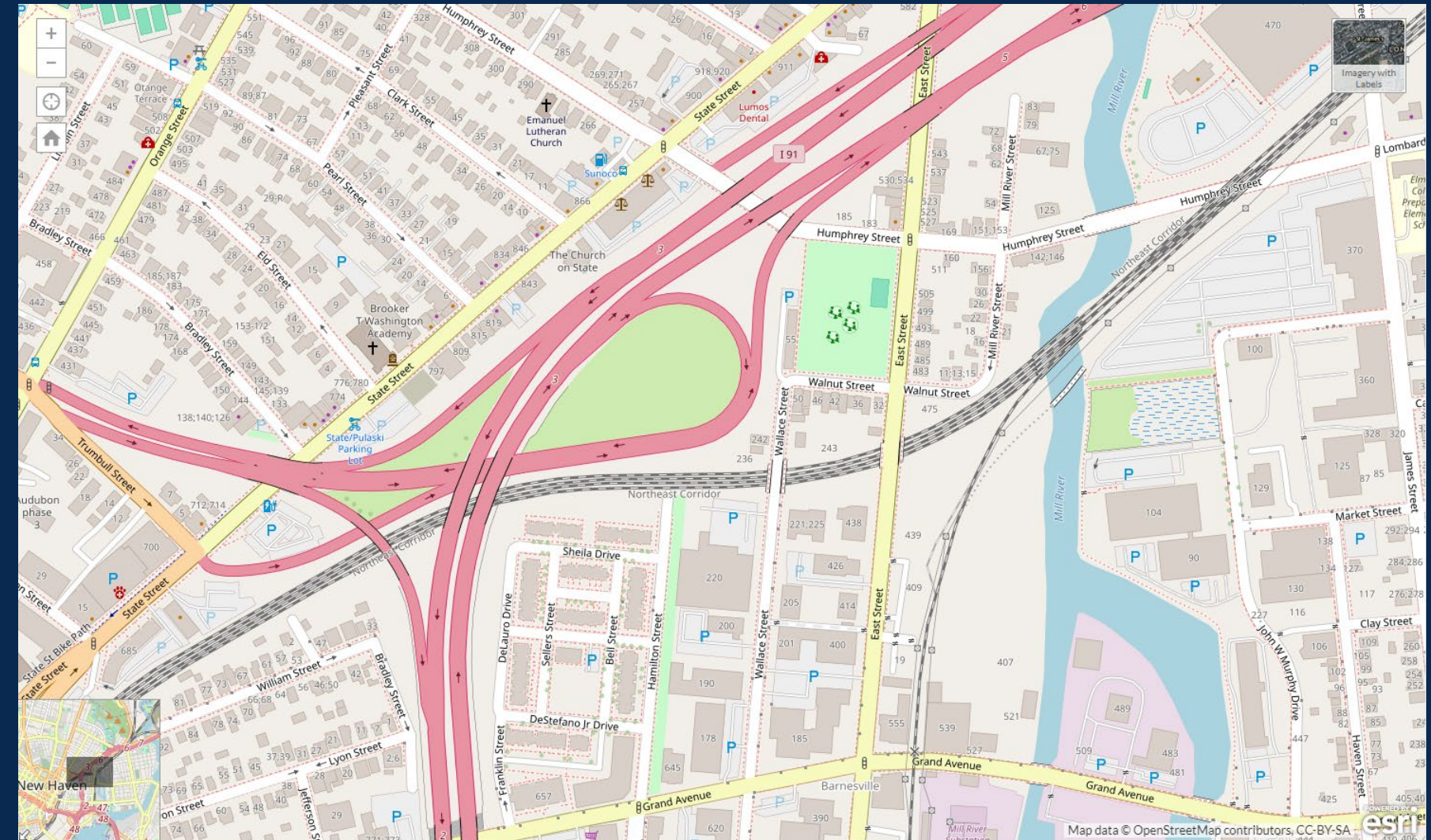
- Provides up to **\$2M** with an 80% Federal / 20% Local match for planning efforts.
- **Purpose:** To “...mitigate highways” in ways that advance mobility, access, economic development, equity and justice, and climate change mitigation.



Why do we need it?



1931



2024

The construction of I-91 destroyed dozens of city blocks and many hundreds of homes, creating a barrier that cuts the city in half.

Why do we need it?

- We can't undo the harms of the past.
- What we can do is fund specific ways to repair the fabric of our community that was torn apart by interstate highways construction.
- By mitigating the physical and social divides created by I-91, this project will make it easier for people to access jobs, healthcare, places of worship, and education.

What exactly are we doing?

The I-91 Neighborhood Reconnection Initiative will:

- Identify and acknowledge the harms perpetuated by the construction and continued presence of I-91, particularly to low-income community members.
- Increase safety, mobility, and access for people around and across I-91, including for those who walk or roll, bicyclists, or use other means of transportation.
- Advance economic development, safety, quality of life, and affordable housing.

How will we do that?

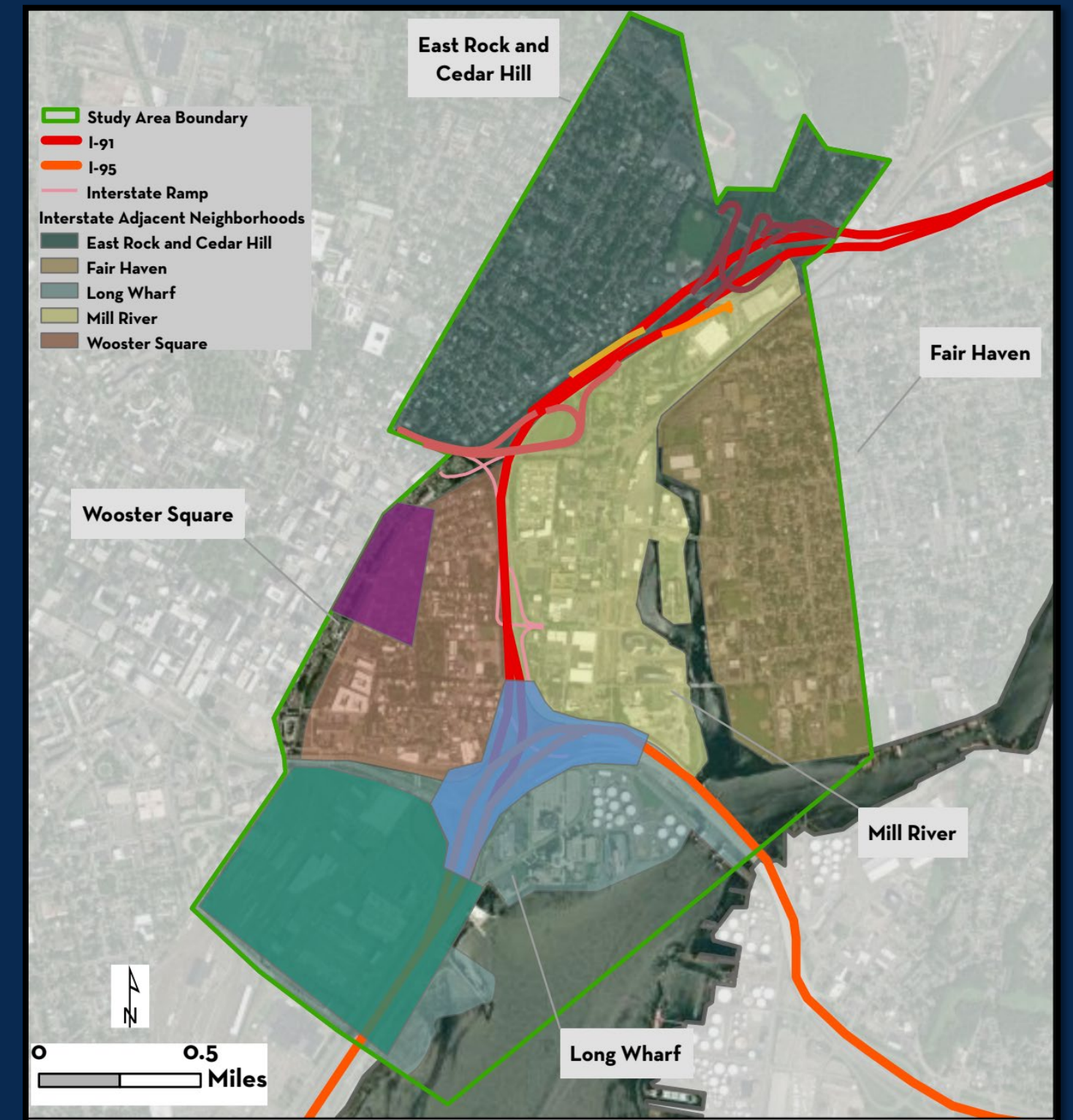
The I-91 Neighborhood Reconnection Initiative will:

- Engage experts to conduct technical studies to develop a strategy for reconnecting neighborhoods.
- Procure architects and planners to lead community engagement and design efforts aimed at integrating the highway into the surrounding urban fabric.
- Build capacity to oversee this work and explore housing and retail development opportunities to promote equitable growth.

Where will this happen?

The I-91 Neighborhood Reconnection Initiative focuses on:

- Exit 6 at Willow St. / Blatchley Ave
- Exits 4-5 at State St.
- Mill River District to East Rock
- Exit 3 at Trumbull St.
- Wooster Square Court to Audubon
- I91-I95 Exchange/Underpass
- Union Station to Long Wharf



DRAFT Overview Map

Where will this happen?

Additional DRAFT breakout maps:

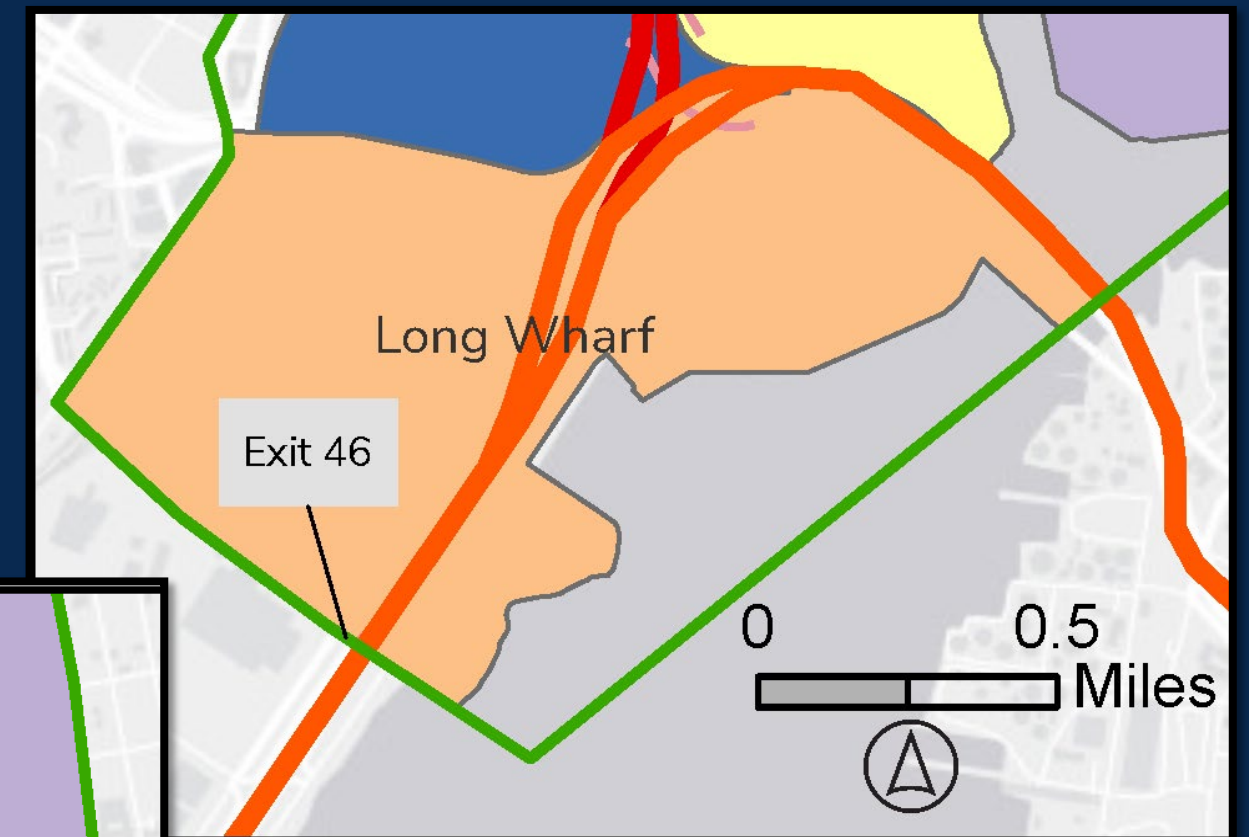
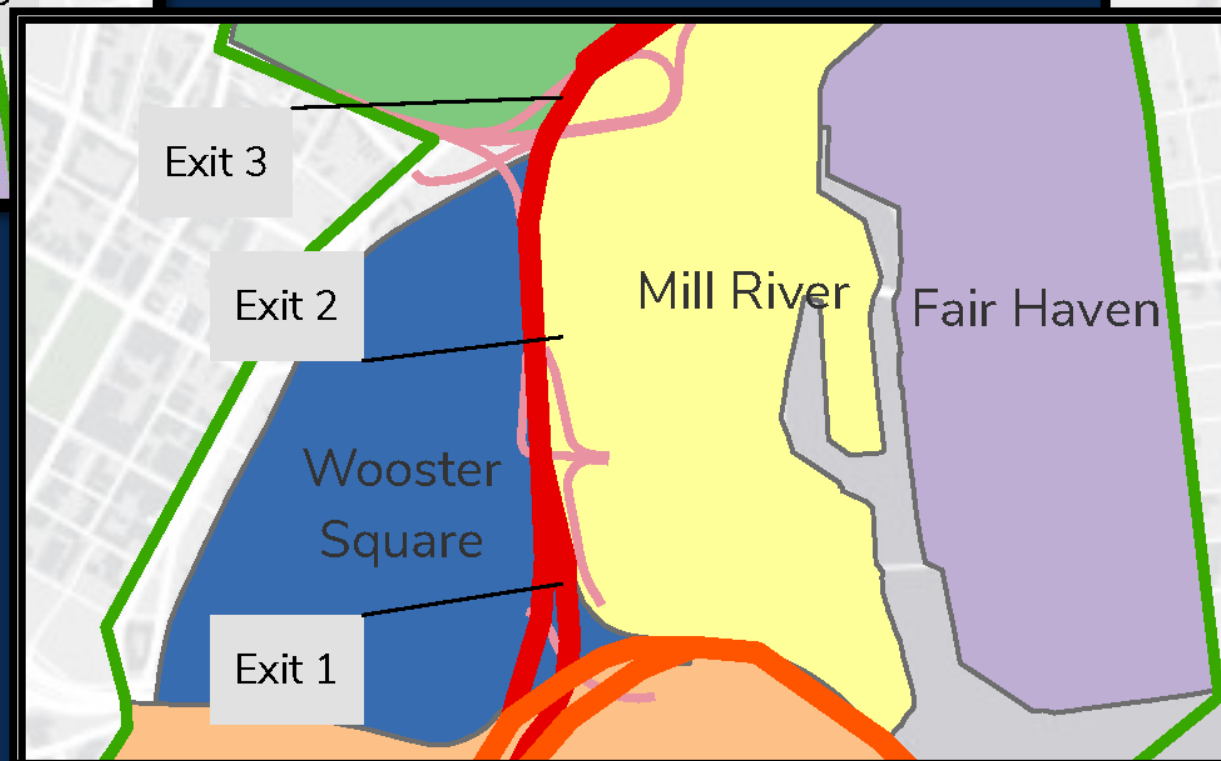
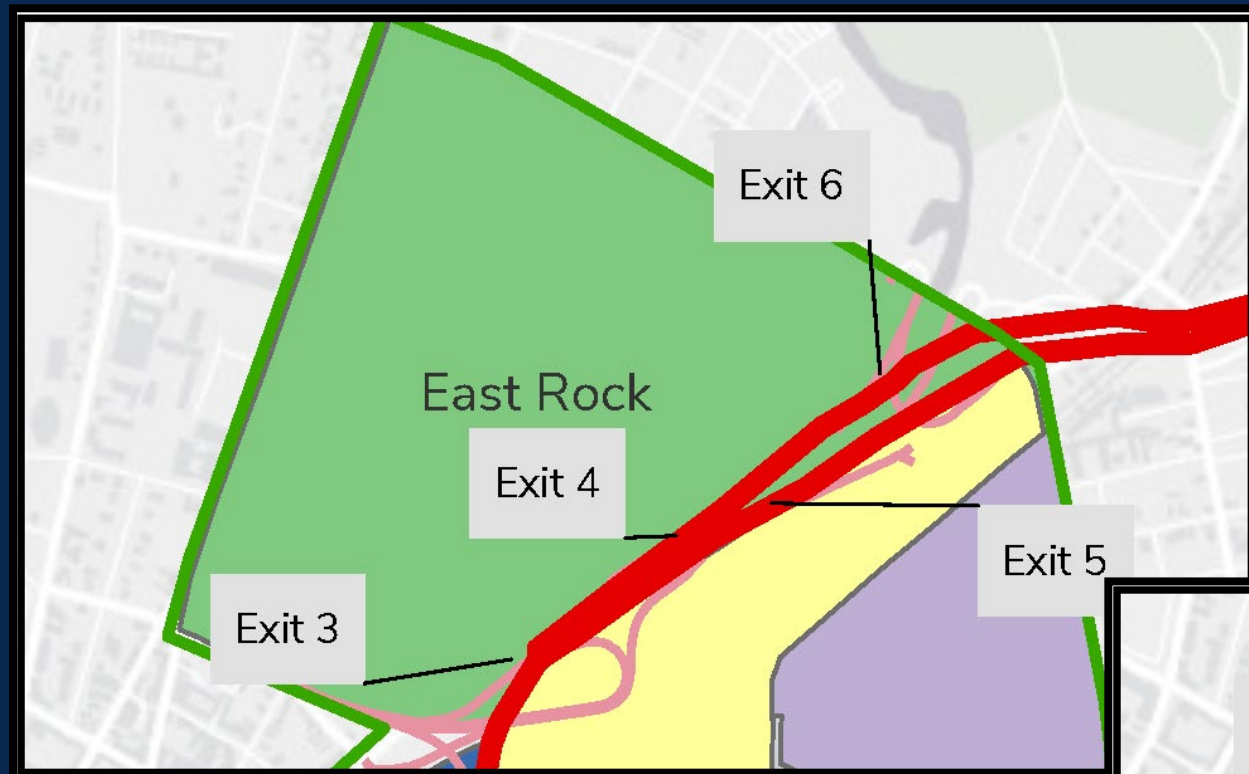
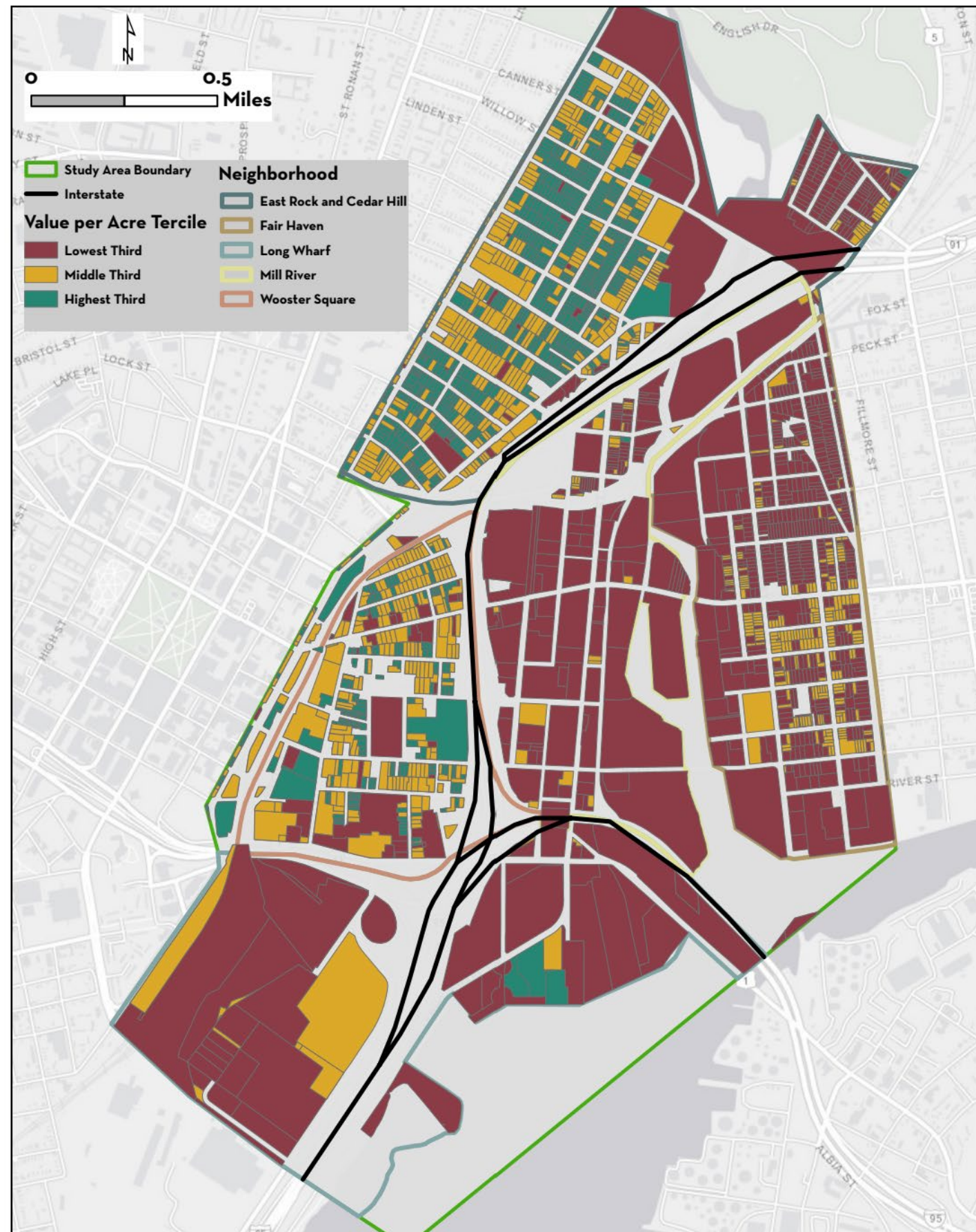


Figure 3: Appraised Land Value per Acre
City of New Haven: I-91 Neighborhood Reconnection Initiative



The effects

The City was partitioned, concentrating lower-income residents and minorities to the East.

How can we help?

A Letter of Support goes a long way!

- We have a Letter of Support guide that has key points about the project, and a template if you prefer.
- Brief, honest letters unique to your perspective work best.
- Please complete and return to Laura Brown (lebrown@newhaventct.gov) by **Wed. Sept. 25!**
- We know this is a fast turnaround, but our application is due to USDOT **Sept. 30.**



Questions? Comments?

Thank you so much for your support!