

Quantum & Bioscience Innovation Cluster

**Community Services and Environmental Policy Committee
New Haven Board of Alders
April 3, 2025**

About Innovation Clusters

- **The State of Connecticut is making available up to \$100 million to support the growth of innovation clusters towards “the catalytic advancement of key economic sectors, including (but not limited to) biotechnology, financial services and technology, advanced manufacturing, renewable energy, insurance services and technology, software development, artificial intelligence, quantum technology and advanced computing.”**
- **There are three finalists selected to submit full applications, one in the New Haven region (the Quantum & Bioscience Cluster) and one each in the Stamford and Hartford regions.**
- **As envisioned, the Quantum & Bioscience Cluster can be a globally competitive innovation district building on the state’s life science infrastructure, in order to solidify the State of Connecticut’s leadership in bioscience and foster growth in quantum technologies.**
- **The proposed cluster will focus on longstanding priorities by completing the New Haven Downtown Crossing project and by adhering to inclusive growth, connecting residents to opportunities in emerging job sectors. This will include investments in workforce and cultural equity as well as new public infrastructure of promenades, bike and pedestrian paths, and streetscape enhancements, aligned with other projects including Union Square and the State Street Redesign.**

Strategic Outcomes



Long-term potential to create 45% more economic development space directly tied to DECD investment in the NHV cluster.

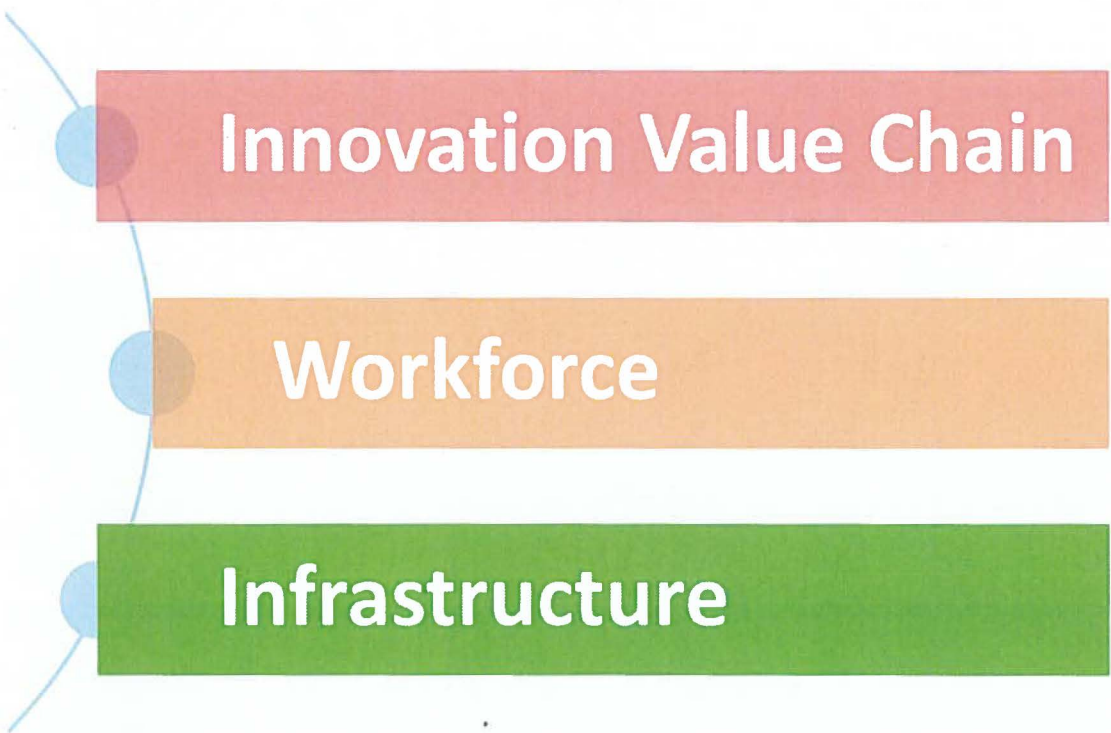


Over 2K new mixed-income housing units in pipeline within walking distance of cluster, anchors and Union Station.



Comprehensive talent development initiative in key sectors for our residents and students as well as for professional development.





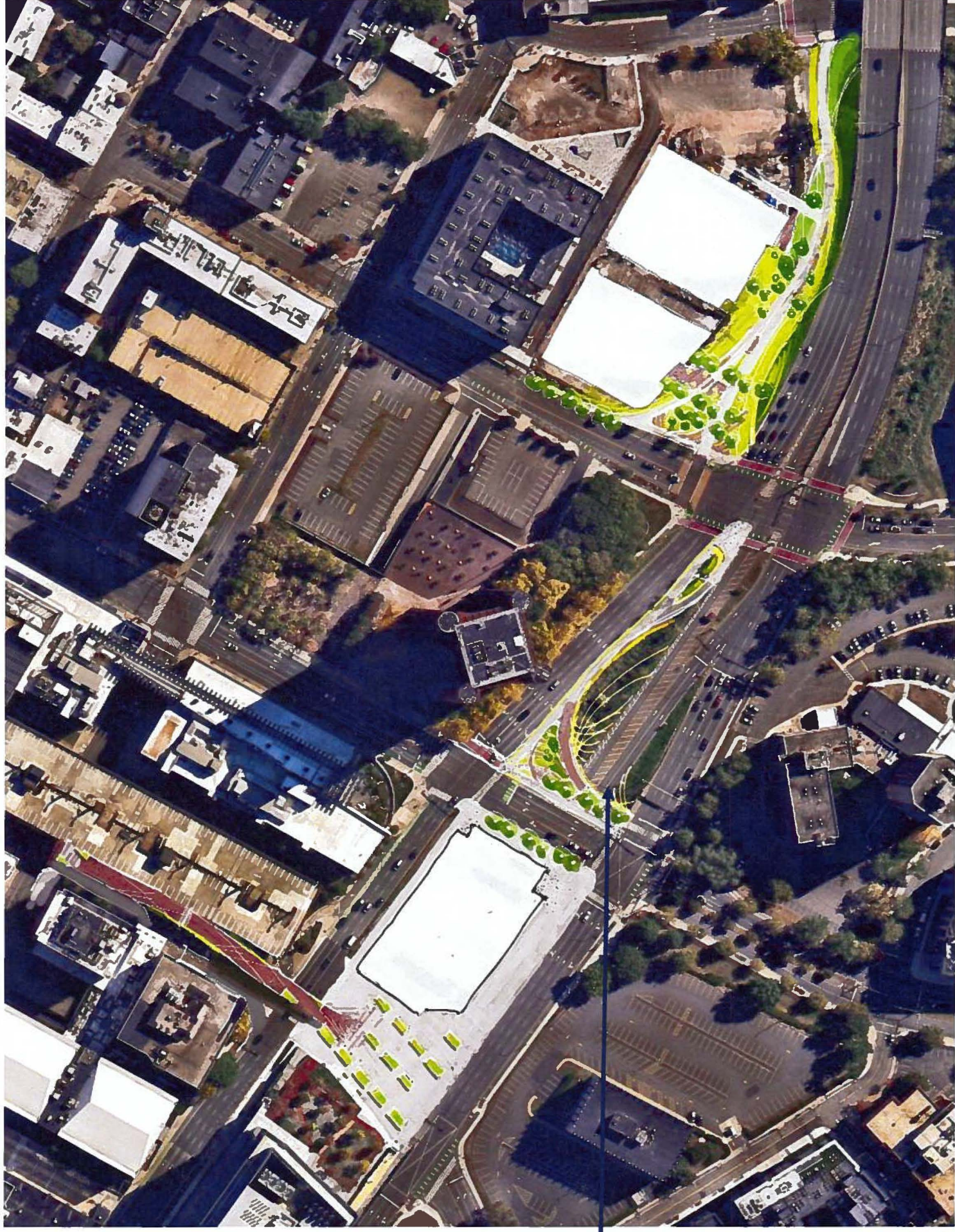
Innovation Cluster	Local (Other)	TAP (80% FED)	TAP (20% Non FED)	IC	Totals
Arc Pedestrian Bridge	\$ 575,000			\$ 3,650,000	\$ 4,800,000
Church Street Promenade		\$ 2,920,000	\$ 730,000		\$ 3,650,000
Linear Park				\$ 1,300,000	\$ 1,300,000
Total	\$ 575,000	\$ 2,920,000	\$ 730,000	\$ 4,950,000	\$ 9,750,000

Infrastructure Budget

Innovation Value Chain + Private Infrastructure		
Life Sciences Support Services	Development Fund Supported (with Defined Benchmarks)	
QuantumCT Early Start Space Build Out		
Public Infrastructure	Parcel B	
	Science @ Square 10	
		QuantumCT Test Beds and Laboratories
Arc Pedestrian Bridge		
Workforce	Church Street Promenade	
	Linear Park	
		Stormwater + Temple St
Uconn Programming		
BioCT Programming		
UNH Programming		
Quinnipiac Programming		
Local Institutions Programming		



**Arc Bridge &
Church Street
Promenade**





Innovation Value Chain

Workforce

Infrastructure

CITY FOCUS AREA:

The Infrastructure initiatives are designed to build on existing efforts like 101 College Street, State Street and Union Square to create an inclusive neighborhood that is welcoming to all. Infrastructure work will likely be constructed in tandem with future development projects. For this first application, the City is looking to extend the Church Street Promenade via an “Arc Bridge” Orange Street via MLK Boulevard.



Innovation Value Chain

Workforce

Infrastructure

The Workforce working group is developing relationships with area colleges and universities as well as with industry in order to create meaningful curriculum at every stage of the process from early middle-school 'experiential' through high school, college and professional development.

The initiative draws upon early success such as the BioLaunch, NHPS BioCity and lessons from larger clusters (eg-Boston).



Innovation Value Chain

The Innovation Value Chain working group is focused on long-term scientific advancements in key industries, led by bio/life science and quantum computing.

Workforce

Infrastructure

The QuantumCT, for example, will help solidify Yale/UConn as a leader in quantum science with space for world class open source computing power, “test beds” and space for new start-ups to mature as growing business.

Infrastructure Working Group	Workforce Working Group	Innovation Value Chain
City of New Haven	Quinnipiac University	QuantumCT
Winstanley Enterprises	University of New Haven	Yale Ventures
Science @ Square 10	Yale Ventures	BioCT
	QuantumCT	CIC
	BioCT	Cure Rare Disease
Team Lead	Team Lead	Team Lead
Reviewers	Reviewers	Reviewers

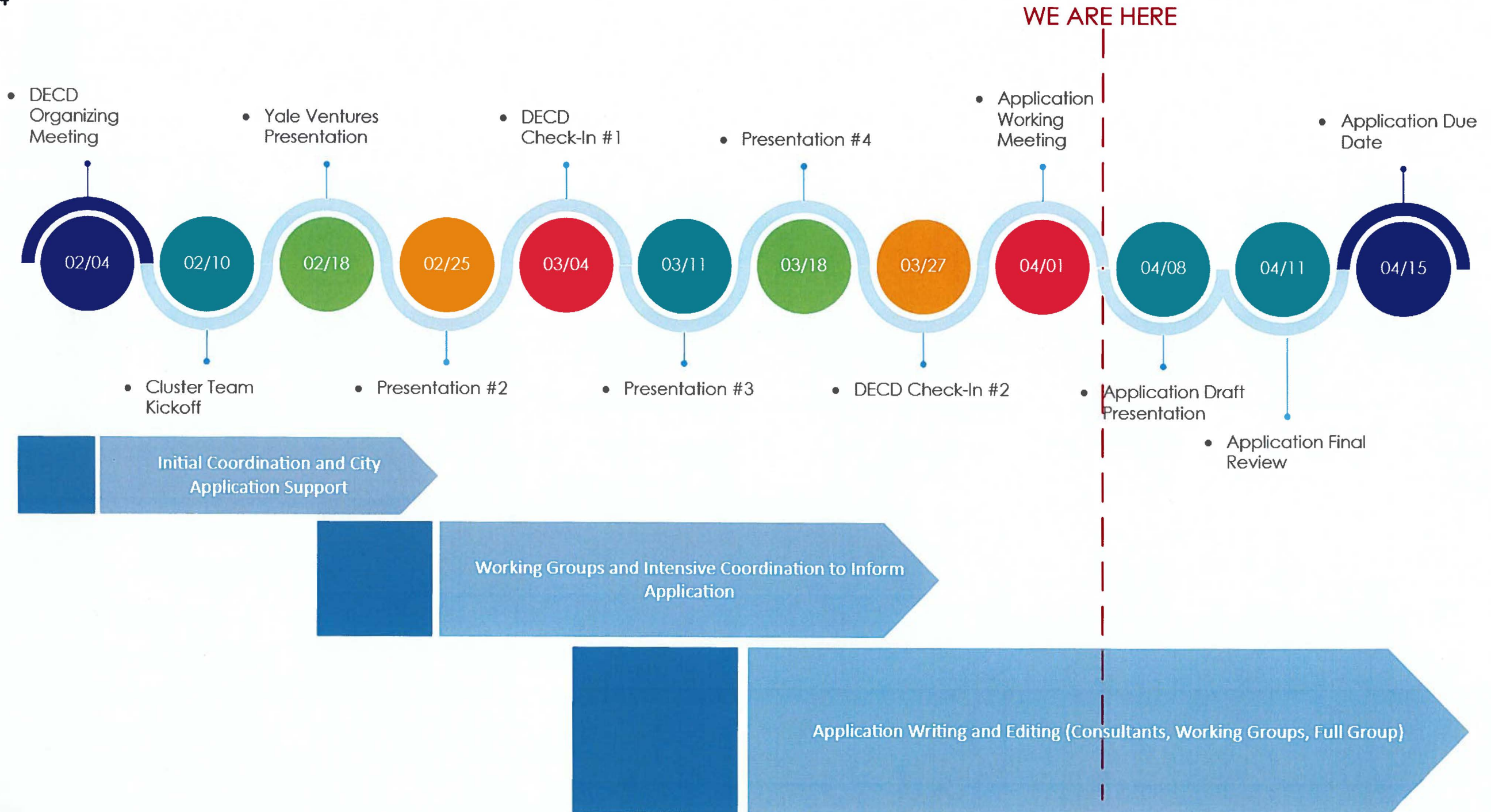


The diagram illustrates the 'Innovation Value Chain' as a vertical stack of three colored rectangular blocks. The top block is red and contains the text 'Innovation Value Chain'. The middle block is orange and contains the text 'Workforce'. The bottom block is green and contains the text 'Infrastructure'. The blocks are connected by a light blue arc at their base, with three small blue circles positioned at the points where the arc meets each block.

Innovation Value Chain

Workforce

Infrastructure



NHV Strategic Vision

Enable Meaningful
Innovation



Create a Place for All



Connect Residents to
Opportunity

